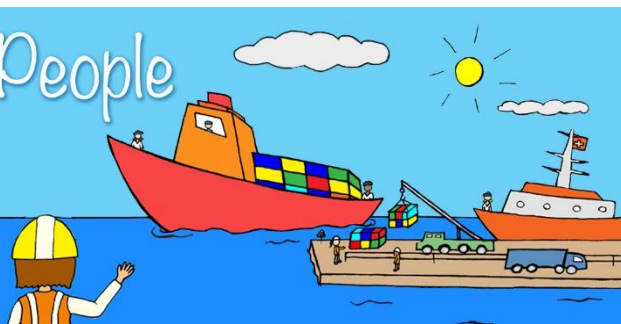


Connecting Ships, Ports and People

K-12 Student Art Contest

www.namepa.net/art-contest

Sponsored by: NAMEPA, USCG, Mystic Aquarium, CIP-OAS



FOR IMMEDIATE RELEASE

Contact: Lyn Harris
(o) 203 255 4686
(e) l.harris@namepa.net

Students Invited to Enter “Connecting Ships, Ports and People” Art Contest

SOUTHPORT, CT—January 25, 2017 Students in grades K–12 are invited to participate in the annual calendar art contest sponsored by the North American Marine Environment Protection Association (NAMEPA), the United States Coast Guard (USCG), Mystic Aquarium and the Inter-American Committee on Ports of the Organization of American States (CIP-OAS). The theme of this year’s contest mirrors that of IMO’s World Maritime Day, “Connecting Ships, Ports and People”. Submissions will be accepted from youth across the Americas (North America, Central America, South America and the Caribbean).

About 90% of the items people use every day are transported by ships and unloaded at ports before reaching our homes, schools, and communities. The men and women employed on the ships and at the ports work very hard to ensure that shipping remains the most environmentally friendly and safest way to transport goods across the world. Students are asked to submit an original poster, by March 31, 2017, that creatively depicts the connections among ships, ports and people and how these connections affect our everyday lives.

Twelve entries (six from grades K–5 and six from grades 6–12) will be selected as finalists by May 12, 2017. Winners will be required to submit their original artwork upon being notified of their selection as finalists. The winning artwork will be featured on the NAMEPA, USCG, Mystic Aquarium and CIP-OAS websites as well as on a printed bilingual (English & Spanish) calendar distributed throughout the Americas. Finalists will receive a certificate and a calendar with the artwork from all 12 winners. Two grand-prize winning artists (one from each of the grade brackets) will be selected and will receive, in addition to the certificate and calendar, a \$100 cash prize and a USCG prize package.

For complete “Connecting Ships, Ports and People” art contest guidelines, submission instructions, prize details, and more information about ports, ships, and their positive impacts on people worldwide, visit www.namepa.net/art-contest. If you have additional questions about the contest, please contact contesthelp@namepa.net.

Who: Students in grades K–12

What: Each entry must be a two-dimensional, original piece of artwork done on white poster board with dimensions of 24” x 18” or 32” x 24” (61 cm x 46 cm or 81 cm x 61 cm) in the landscape orientation. Any art medium may be used; however, computer graphics will not be accepted. Bright colors should be used because they are best for reprinting. Any artwork that includes copyrighted or trademarked product names will be disqualified. The student’s name or school should not appear on the front or back of the artwork.

When: All entries must be uploaded by March 31, 2017.

How: You must take a high-resolution (at least 3072 x 2304 pixels) digital photograph of your poster in order to submit your entry. You or your teacher/facilitator must then upload the digital photo of your poster along with your name, grade, school/after-school program name, school/after-school program address, and teacher/facilitator’s name, phone number, and e-mail address via the submission form at www.maritimeartcontest.submittable.com/submit.

North American Marine Environment Protection Association

The North American Marine Environment Protection Association (NAMEPA) is a marine industry-led organization of environmental stewards preserving the marine environment by promoting sustainable marine industry best practices and

educating seafarers, students and the public about the need and strategies for protecting global ocean, lake and river resources. For more information, visit www.namepa.net .

United States Coast Guard

The U.S. Coast Guard is one of the five armed forces of the United States and the only military organization within the Department of Homeland Security. Since 1790 the Coast Guard has safeguarded our maritime and environmental interests around the world. The Coast Guard is an adaptable, responsive military force of maritime professionals whose broad legal authorities, capable assets, geographic diversity and expansive partnerships provide a persistent presence along our rivers, in the ports, littoral regions and on the high seas. Coast Guard presence and impact is local, regional, national and international. These attributes make the Coast Guard a unique instrument of maritime safety, security and environmental stewardship. For more information, visit www.uscg.mil.

Mystic Aquarium

Mystic Aquarium, a nonprofit 501(c)3 organization, is counted among the nation's leading aquariums with more than 300 species and an extensive collection of marine mammals, including New England's only belugas. Mystic Aquarium has been a pioneer in offering guests a variety of up close encounters with a wide range of marine animals. The mission of Mystic Aquarium is to inspire people to care for and protect our ocean planet through conservation, education and research. Mystic Aquarium receives major support from The Coca-Cola Company, Foxwoods Resort Casino, Resorts World Sentosa and United Technologies Corporation. Learn more at www.MysticAquarium.org.

CIP-OAS

The Inter-American Committee on Ports (CIP) of the Organization of American States (OAS) brings together the National Port Authorities of all 35 sovereign nations of the Americas. CIP promotes competitive, sustainable, inclusive and secure maritime sector development by facilitating policy dialogue at the highest governmental and corporate levels. With close to 100 public and private members representing leading institutions from the maritime industry, CIP strengthens, in collaboration with its partners, institutional and human capacities through seminars, workshops, conferences, courses and scholarship programs. CIP priority areas include, in addition to promoting the protection of the marine environment and sustainable port management practices, competitiveness and logistics; protection and security; tourism and services to ships; legislation and regulation; and CSR and gender equality. For more information, visit <http://portalcip.org/>.

