



Efficient Security Measures in the Cruise Line Industry

Donnie Brown
Vice President, Maritime Policy

CIP Hemispheric Conference on Port
Competitiveness and Security -
Finding the Right Balance

February 24th, 2017

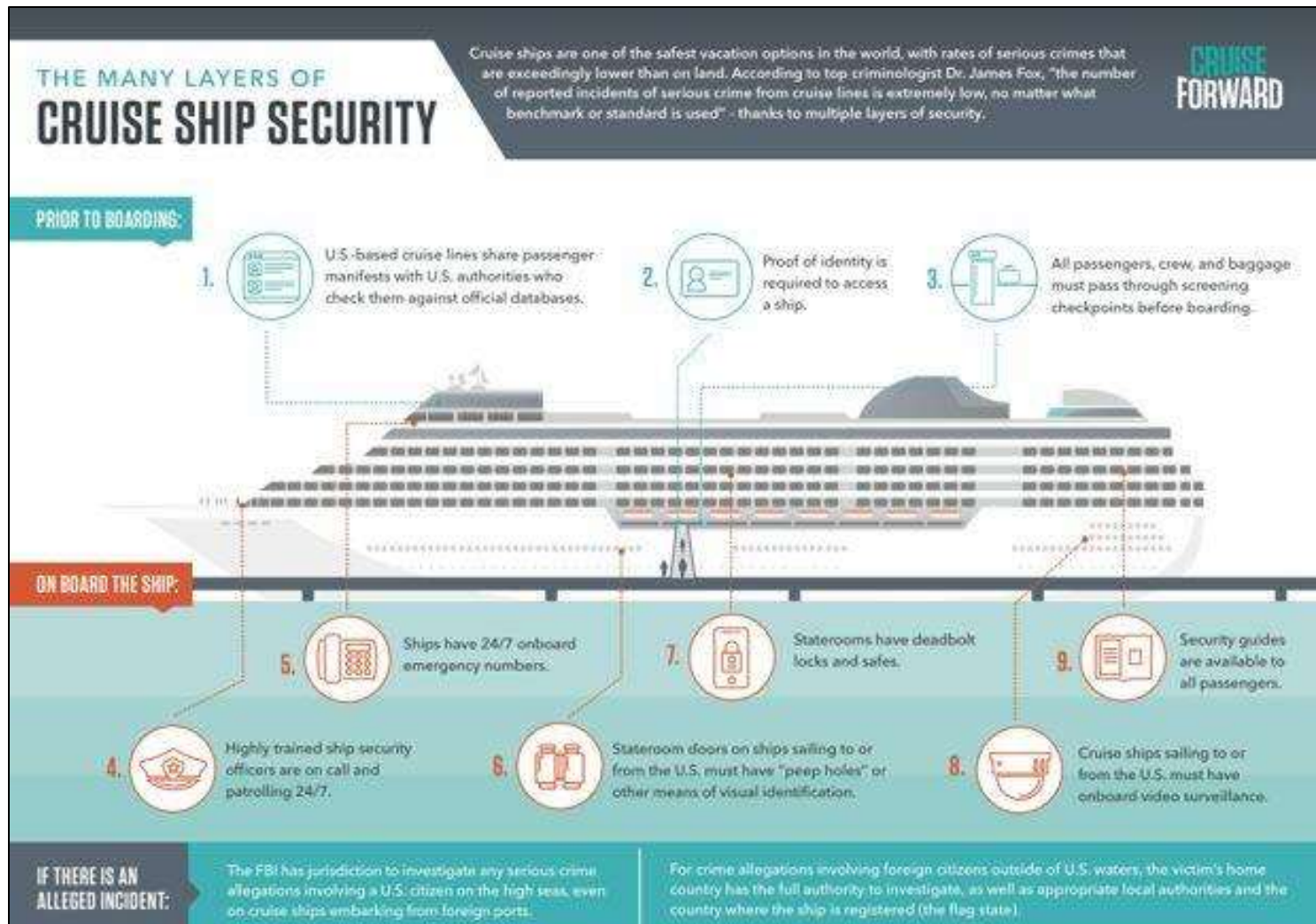
Technical & Regulatory Affairs

- Advocates for industry legal, legislative, and technical positions for global cruise industry
- Actively monitors and participates in development of shipping policies and regulations
- Integrally involved in safety and security of passengers & crew

International Ship and Port Facility Security (ISPS) Code

- Comprehensive measures to enhance security of ships and port facilities, developed in response to the perceived threats after 9/11 to provide a standardized, consistent framework for evaluating risk and flexibility for governments to determine appropriate security levels and measures
- Declaration of Security is the interface between port facility security and ship security, and the security measures each will implement

Layers of Cruise Ship Security



Security by the Numbers

- 94% of cruise guests believe cruise ships are safe & secure
- Passenger & baggage must be screened prior to boarding
- 24/7 access to specialty trained ship security & an FBI reporting hotline
- Security camera monitoring on board



Protections to Keep Passengers Safe & Secure

- Sophisticated security departments
- Special training to handle unique issues that arise at sea
- At least one Crewmember trained in crime prevention, detection and reporting



Cruise Ship Security

- Crimes are incredibly rare
- Dr. James Fox of Northeastern University: “By any measure, travel by sea aboard commercial cruise lines is exceptionally safe.”



Transparency in Reporting

- Worked with U.S. policymakers on crime reporting legislation: Cruise Vessel Security and Safety Act (CVSSA)
- Established the world's most comprehensive set of laws to protect passengers
- Cosponsored a complementary proposal with international standards

CLIA Policy on Crime Reporting

- 2010 Cruise Vessel Safety and Security Act (CVSSA) codified existing CLIA policies and industry practices
- By policy, CLIA Members
 - Report serious incidents to the ship's flag State
 - Report serious incidents to local law enforcement, when appropriate, including the location of the ship when the incident occurred
 - All passengers and crew are to be provided the means and assistance to contact law enforcement authorities
- Policies are mandatory industry-wide

Reporting

- Flag State
- Federal Bureau of Investigation (FBI)
- U.S. Coast Guard
- Local Authorities



International Leadership

CLIA coordination with IMO Legal Committee for adoption of IMO Guidelines to assist masters, with respect to the preservation of evidence and the pastoral and medical care of persons affected and, when appropriate, the collection of evidence, during the time period between the report or discovery of a possible serious crime and the time when law enforcement authorities or other professional crime scene investigators take action.

Available Resources



CruiseForward.org



Cruising.org

ONE INDUSTRY. ONE VOICE.

