

Social Responsibility and Environmental Sustainability in the Maritime-port Sector

Strategies for Integrated Development

Presentation to OAS 3rd Hemispheric Seminar on Port-City Relation, Social Responsibility and Gender Equality.

10 November 2022

Dr. Carrol Pickersgill



CARGO



CRUISE



BPO



LOGISTICS



**HARBOURS &
PORT SERVICES**

OUR BUSINESS SEGMENTS

Jamaica's principal maritime agency established by the statute - Port Authority Act in 1972

PEOPLE, PLANET, PURPOSE, PROFIT (PROSPERITY)

CHALLENGES FACED IN JAMAICAN PORT TOWNS



Traffic congestion, limited pedestrian/rest areas & lack of public sanitary conveniences in resort towns.

Poor/inadequate support infrastructure

- Unpaved streets, wastewater/sewage, poor lighting, & dilapidated building structures

Negative feedback: Harassment; Lack of diverse shopping; authentic live cultural experiences.

PAJ Response: Tackling infrastructural deficiencies in key port towns such as Falmouth, Ocho Rios and Port Royal.

- Construction of new shopping, entertainment & culinary facilities to support activities of the townspeople.

Additional township upgrades:

- Streetscaping
- Training of relevant persons in respective communities
- Creating employment opportunities

FALMOUTH (THEN)



Old Market

BEFORE

FALMOUTH: TODAY



Streetscaping



New Market



Craft Village



Entrance to Hampden Wharf



Pedicab

OLD OCHO RIOS FISHING VILLAGE (THEN)



BEFORE



OCHO RIOS FISHING VILLAGE (BEFORE)



AFTER (ORFV)



OCHO RIOS FISHING VILLAGE (ORFV)



NEW OCHO RIOS FISHING VILLAGE

6 CLEAN WATER AND SANITATION	7 AFFORDABLE AND CLEAN ENERGY	8 DECENT WORK AND ECONOMIC GROWTH	17 PARTNERSHIPS FOR THE GOALS

- Old Fishing Village: Harassment; environmental decay.
- New FV: energy, sanitation, personal development etc.
- Collaboration – UDC, Sailors Hole fisherfolk.

PORT ROYAL

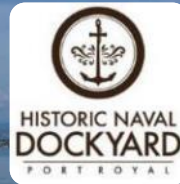
BEFORE



DURING

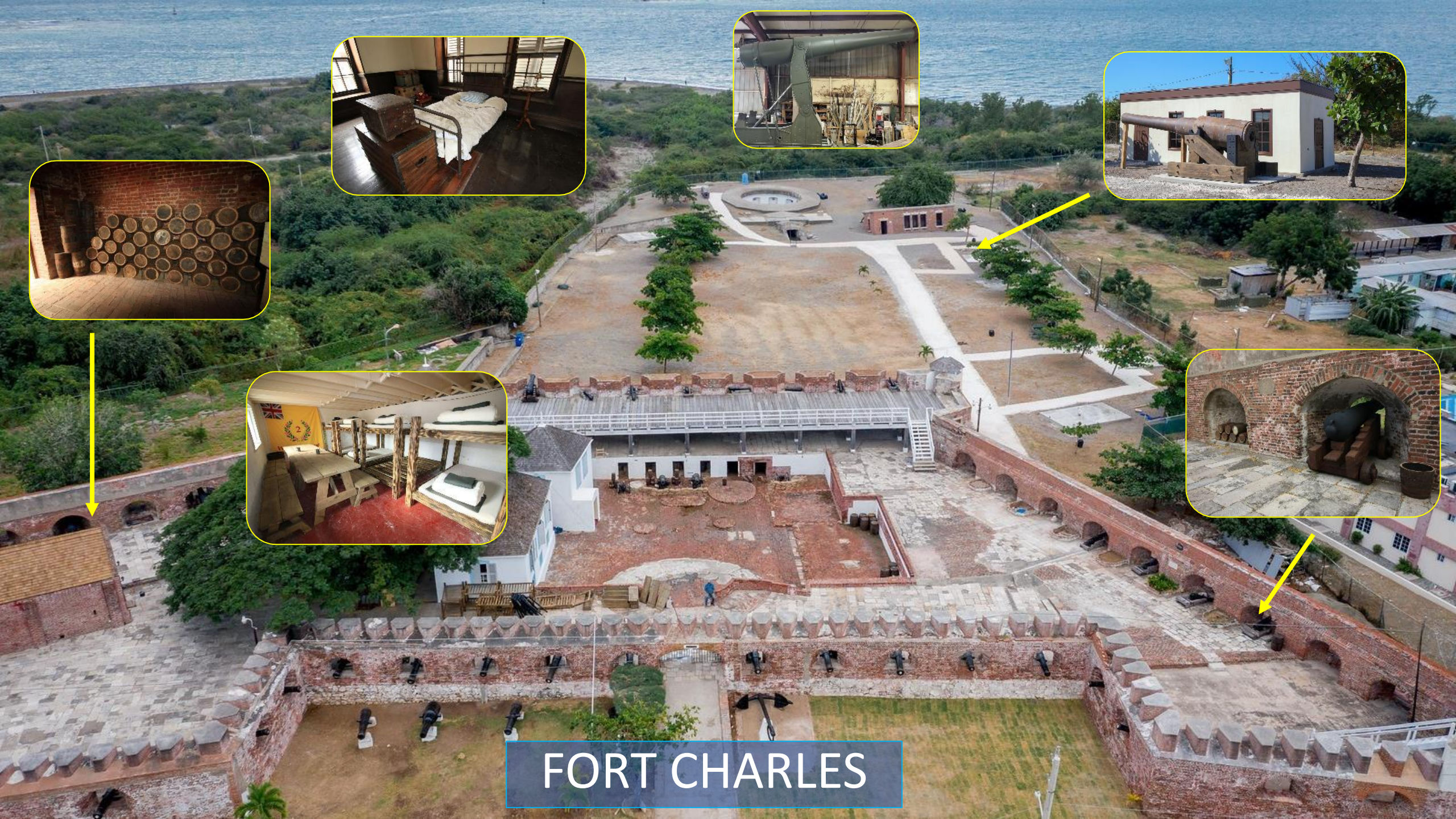


AFTER



Environmental, Historical/cultural (Sunken City), Economic (gateway to Kingston).

- **Innovation:** Seawalk
- **Sea-Level Rise compensation:** raised site over 1m, coastal defence (rubble revetment).
- **Reduced surface runoff** due to high rate of filtration of existing substrate.
- **Habitat conservation:** mature red mangrove stand untouched
- **Heritage structures** (columns) maintained on terminal site.
- **Collaboration:** citizens, PR brotherhood (housing), stakeholders etc.



FORT CHARLES

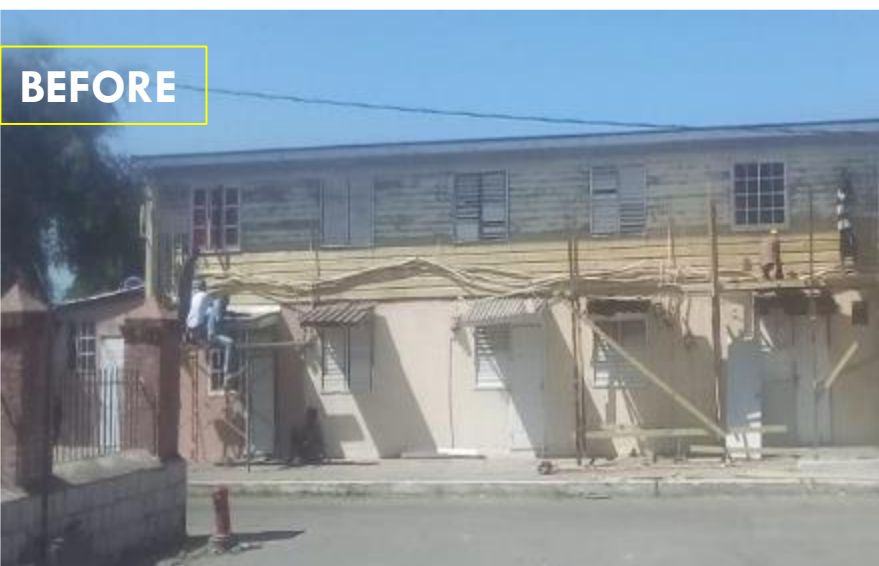
ROUTE TO SEWAGE TREATMENT PLANT

- 2 Fort & Museum
- 3 Housing Development
- 5 Port Development
- ★ Proposed Sewage Treatment Plant
- 4 Town Center



- Plant size: **150 cubic metres/day**
- Design capacity: **250 cu.m/day (NWC)**
- Tertiary treatment
- High rate of nutrient removal
- Odourless operation





Brotherhood Housing



AFTER



Primary & Infant School



**PORT ROYAL
TOWN
INITIATIVES**



Old Ferry Pier Rehab



Fishermen's Regatta 2022



23 likes
portauthorityja A sea of trophies for the winners and runners-up of the activities here at the 2022 #PortRoyal #FishermensRegatta, proudly sponsored by The #PortAuthorityJal
August 20



COLLABORATION



Ministries, Departments & Agencies

- Tourism Product Development Company
- Tourism Enhancement Fund
- National Environment & Planning Agency
- Municipal Corporations
- Jamaica National Heritage Trust



Social

- Jamaica Social Investment Fund
- HEART Trust/NTA
- Jamaica Business Development Corp.
- University of the West Indies
- National Works Agency



Educational

- National Water Commission
- Social Development Commission
- Urban Development Corporation
- Community groups/ Benevolent associations



Private

GENDER EQUALITY

Total Staff Complement = 415: 269 (M); 146 (F)

- Senior Management: 38 male/ 25 females
- Superintendent of Pilotage - Female
- AVP Security - Female
- Marine Pilots – Females (1)
- Engineers – 50% of recently hired civil engineers are female.

Board Composition:

- At least 30% female or 30% male (gender balance)
- Corporate Governance Framework endorses diversity and equality of opportunity in the selection and nomination of members of boards.



**Women across
all PAJ
business lines**

SVPs

Pilotage

Engineering

**Harbours & Port
Services**

LESSONS LEARNED

- **Redefined stakeholder engagement strategies: early, regular stakeholder engagement at all levels** critical to identify/address project needs and social inclusivity.
- **Sustainable approaches** (i.e. economic growth, social inclusion & environmental protection) in port development projects.
 - Energy efficiency & water conservation measures - LED & solar technology use in port facilities, navigational aids
 - Grasscrete utilization in car parks e.g. ORFV
 - Frequent town halls with community groups
- **Infrastructural & social investments in port towns** (water, sewage, roads, personal development) will enhance project success.
- **Fostering innovation** while promoting capacity-building of the Jamaican population **through partnerships** are crucial steps towards sustainability and enabling good quality of life.





Alignment with UN SDGs

- Expertise & technologies related to climate change (Seawalk etc)
 - Clean energy
 - Resilient infrastructure
 - Adaptation
- Innovation/Technology (PCS etc)
 - Public Private Partnership

THANK YOU