



MSW vs PCS at the Port of Bridgetown

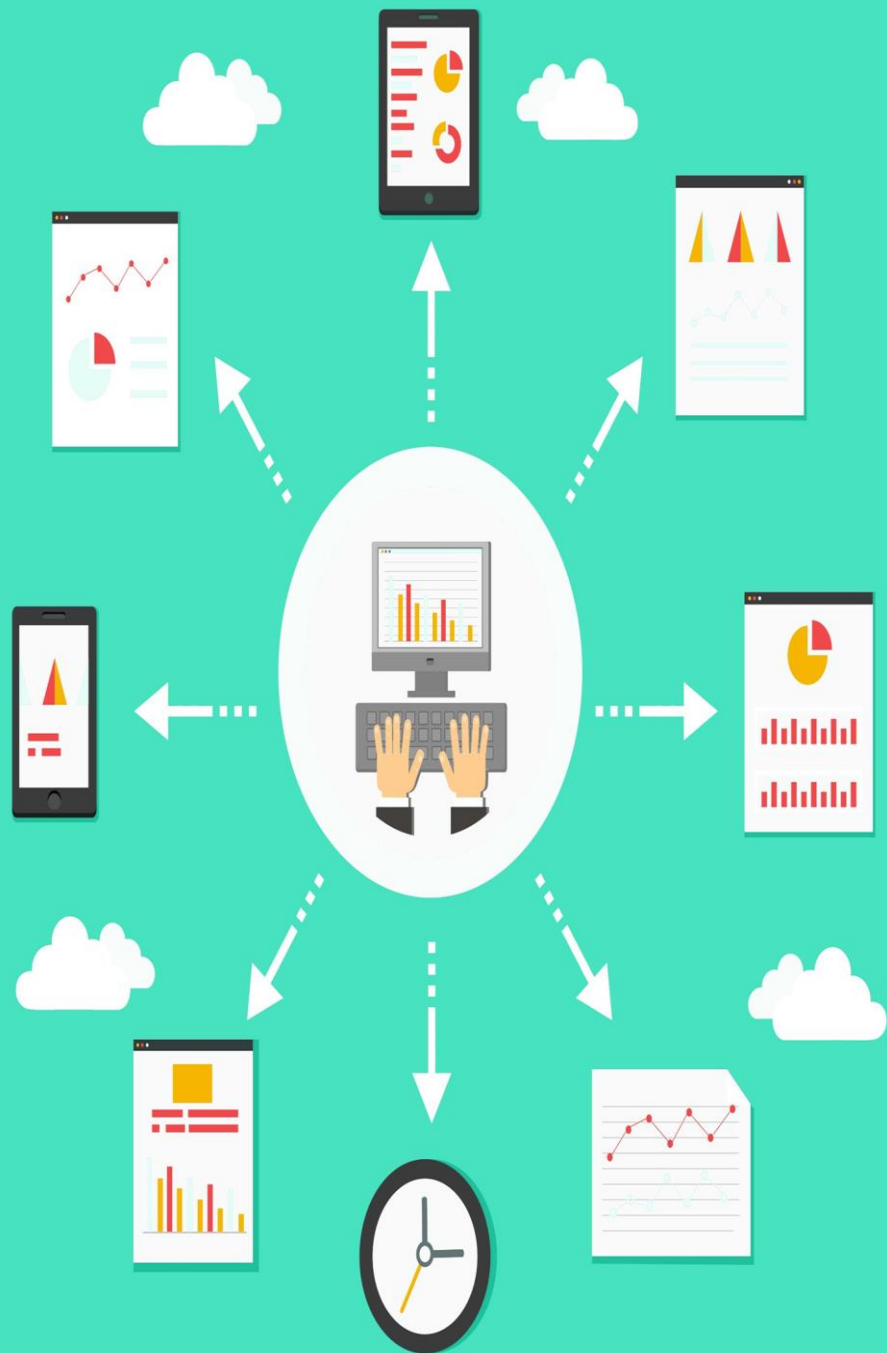
Rommel Edwards,
Manager,
Digital Innovation & Development,
Barbados Port Inc.



- Small, multipurpose port handling 90% of imports.
- Approx 1,100 vessel calls yearly.
- Over 1.1 million tonnes annually.
- Vision to be the most innovative green maritime hub in the world by 2030.
- Built the Caribbean's first homegrown Maritime Single Window.
- Will build our own Port Community System.

Introduction to
Barbados Port Inc.





What is a Maritime Single Window (MSW)?

- Single point of submission
- Centralized hub
- Eliminates duplicity
- Specific to maritime traffic



What is a Port Community System (PCS)?

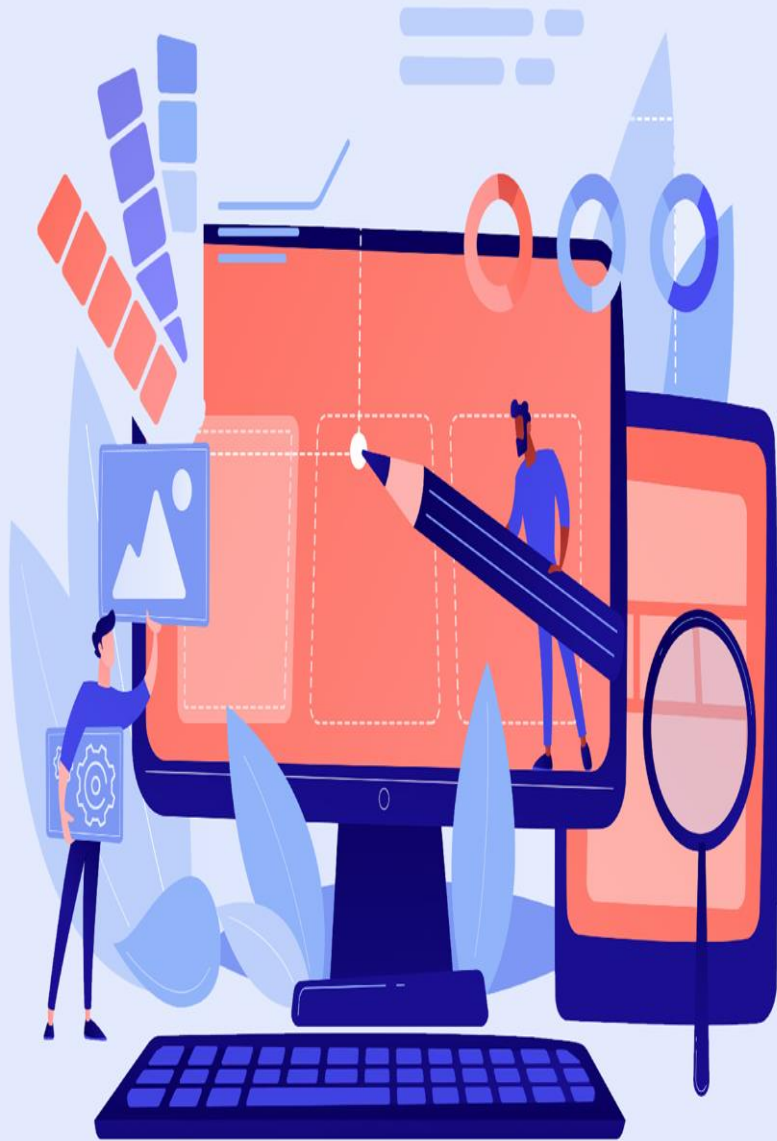
- Similar objectives to MSW
- Single point of submission
- Eliminates duplication
- Serves the wider port community





Why did we build the MSW?

- Need to streamline
- Eliminate paper
- Reduce vessel turnaround
- Address IMO mandates



Why are we building a PCS?

- Trade facilitation
- Ease of doing business
- Competitiveness
- Reduction in costs



BARBADOS
PORT INC.



WHY?

Why separate projects?

- Different organizations
 - IMO
 - WTO
 - UNCTAD
- Different target audiences
- Imposed timelines



How will the PCS and MSW interact?

- Data Harmonization & Exchange
- Workflow Management
- Information Sharing
- Security & Compliance



BARBADOS
PORT INC.



Challenges

- Change Management
- Labour
- Cybersecurity
- Legislation

Benefits

- Reduced Costs
- Shorter Turnaround Times
- Collaboration & Information Sharing
- Environmental Impact



BARBADOS
PORT INC.



Key Takeaways

- Engage external neutral experts:
 - Legal
 - Technical
 - Cyber
- Don't reinvent the wheel
- Don't implement in a silo
- Not a fix-all
- Stakeholder engagement



Thank You!

Rommel Edwards

redwards@barbadosport.com

1 (246) 233 - 7385

