

Christopher Hamilton

17 January 2024



6th Hemispheric Conference on Logistics,
Innovation and Competitiveness

BUILDING THE PORT FUTURE

IMPACT OF MARITIME SINGLE WINDOW ON PORT LOGISTICS

2. INTRODUCTION



A **substantial portion of global cargo relies on maritime transportation**. This underscores the need for efficient administrative procedure within ports to ensure the seamless flow of goods. Ports are integral to the functioning of international trade and logistics, serving as crucial nodes in the global supply chain.



Inefficient administrative processes in port lead to disruption of supply chain, escalated costs to maritime business stakeholders and deceleration of economic growth.



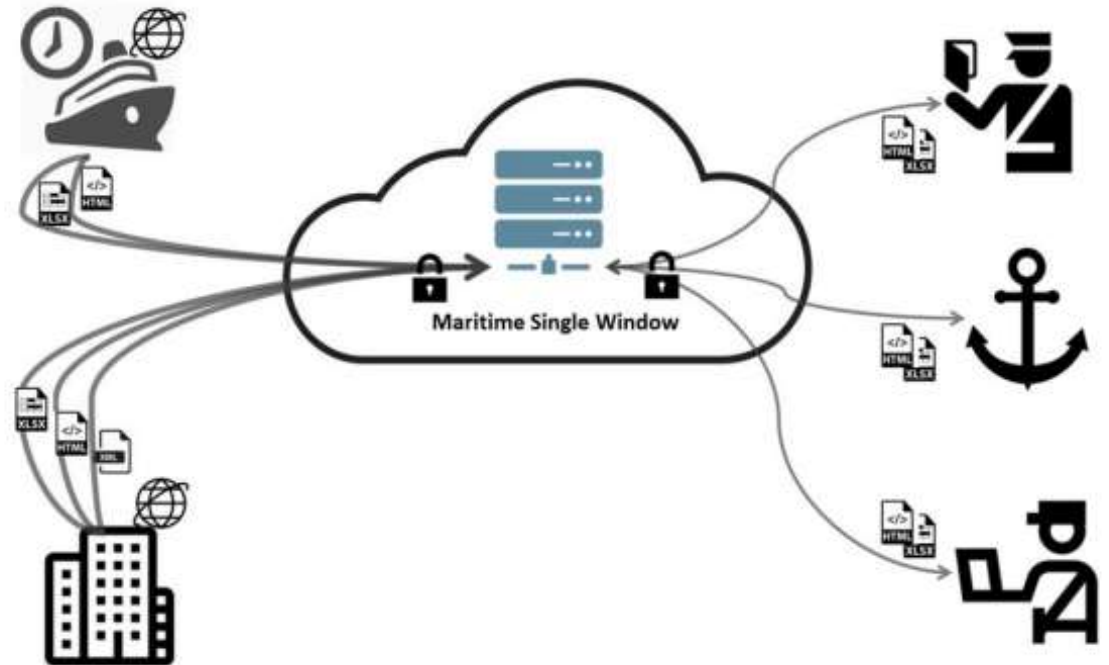
To address this long-standing problem **ports must improve the management of the procedures of administration within the industry to enhance the efficiency of the port operations**; the submission, collection and management of information; and the opportunities for growth within the sector.



Implementation of the Maritime Single Window can facilitate this objective.

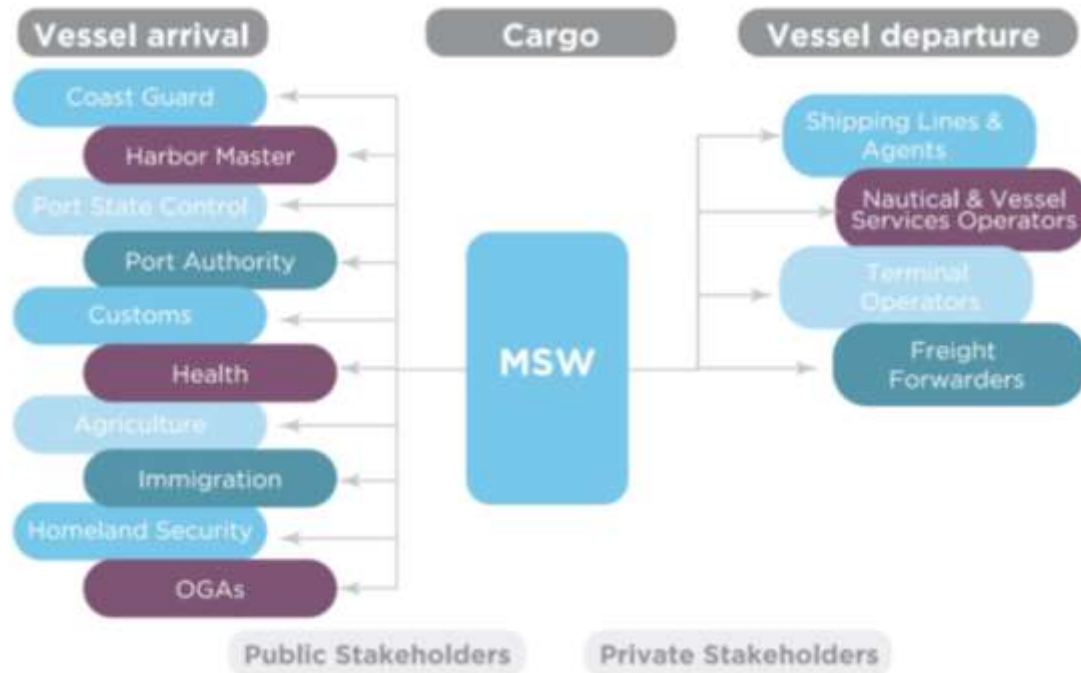
3. MARITIME SINGLE WINDOW (MSW)

- Concept and a system designed to streamline reporting procedures for ships entering and leaving ports.
- Enables all the entities involved in the maritime business process **to input the data and information for all the stakeholders only once**, using a single point of entry.
- This effectively reduces the administrative burden and improves efficiency of port operations.



Source: IMO Guidelines for Setting Up A Maritime Single Window 2021

3b. MARITIME SINGLE WINDOW (MSW): OBJECTIVE



- Simplify Reporting Procedures
- Enhancing Efficiency
- Improving Data Quality
- Promote Transparency and visibility
- Facilitate Regulatory Compliance
- Support Trade Facilitation

To streamline and simplify the reporting and data exchange procedures related to the maritime transport and port operations. By providing a single point of entry for submission of information the MSW facilitates efficient and seamless communication among stakeholders (ships, port authorities, customs agencies, immigration authorities)

HOW IS THIS ACHIEVED?



Centralized Reporting: Maritime Single Window (MSW) consolidates all reporting requirements into a single platform where ships submit all relevant information, arrival and departure notifications, declarations and the relevant data via the unified interface. Effectively eliminating the need for multiple separate submission to various agencies and authorities.



Standardized and Harmonized Data Formats: To be effective MSW should employ use of standardized and harmonized data formats and protocols for the exchange of information ensuring easily access and process the data submitted.



Data Sharing: Facilitates the sharing of information among different agencies and organizations involved in port operations.



Electronic Communication: Leverages electronic communication and workflow capabilities to automate the processing of incoming data and streamline administrative procedures.



Transparency and Compliance: Providing a centralized platform for reporting and data exchange, MSW enhances transparency and visibility into port activities for all stakeholders and regulatory compliance by ensuring that the required information is submitted.

4. IMPACT ON PORT OPERATIONS

Streamlining customs procedures - Improving efficiency in cargo handling and clearance

Enhancing security and safety measures

Reduces administrative burden on port authorities and stakeholders

Reduces vessel time at anchorage and at berth

Minimizes emissions

Improves ship call safety

Allows synchronization by stakeholders serving the vessel

Lessens administrative burden on public bodies

Optimizes processes and risk management

Opens up opportunities and competitiveness

5. BENEFITS FOR PORTS:

- **Efficiency** – Processes lead to faster clearance, reduced ship waiting times and availability of cargo (Cargo throughput)
- **Compliance and Enforcement** – Better compliance with regulations and enforcement of port and customs procedures
- **Enhance Security** – Facilitates better control and monitoring of vessel and cargo movements, effectively improving maritime security
- **Data Standardization** – Standardizes Data exchange and promotes interoperability between different systems, stakeholders

6. MARITIME SINGLE WINDOW: BEST PRACTICES - SINGAPORE

Singapore Maritime Trade (digitalPort@SG)



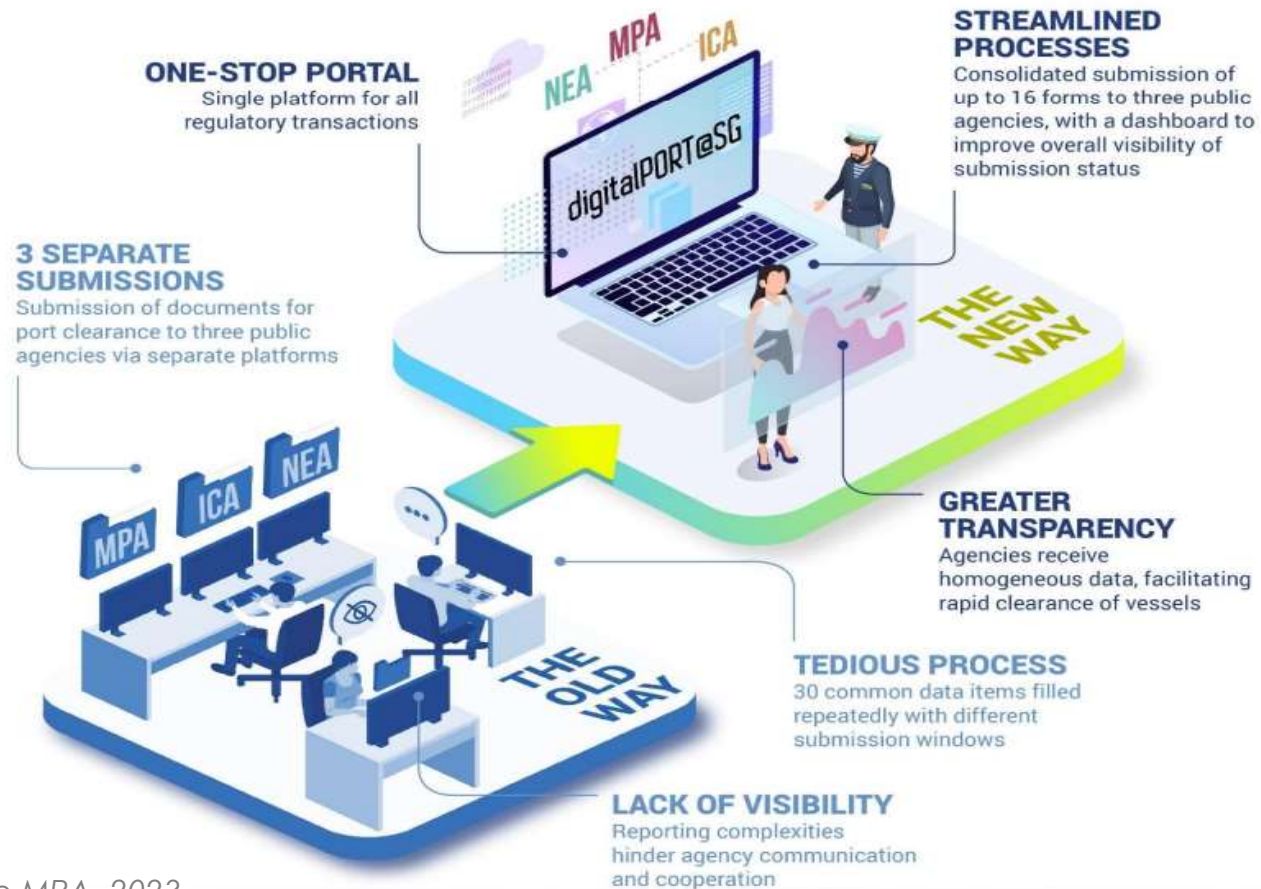
- Approvals for both incoming and outgoing vessels from three (3) distinct public entities:
 - MPA
 - Immigration and Checkpoint Authority
 - National Environment Agency
- Attained from amalgamation of 16 separate forms in a single comprehensive application
 - Positive outcome of consolidation - enhancement of efficiency within the maritime sector

MARITIME SINGLE WINDOW: BEST PRACTICES - SINGAPORE



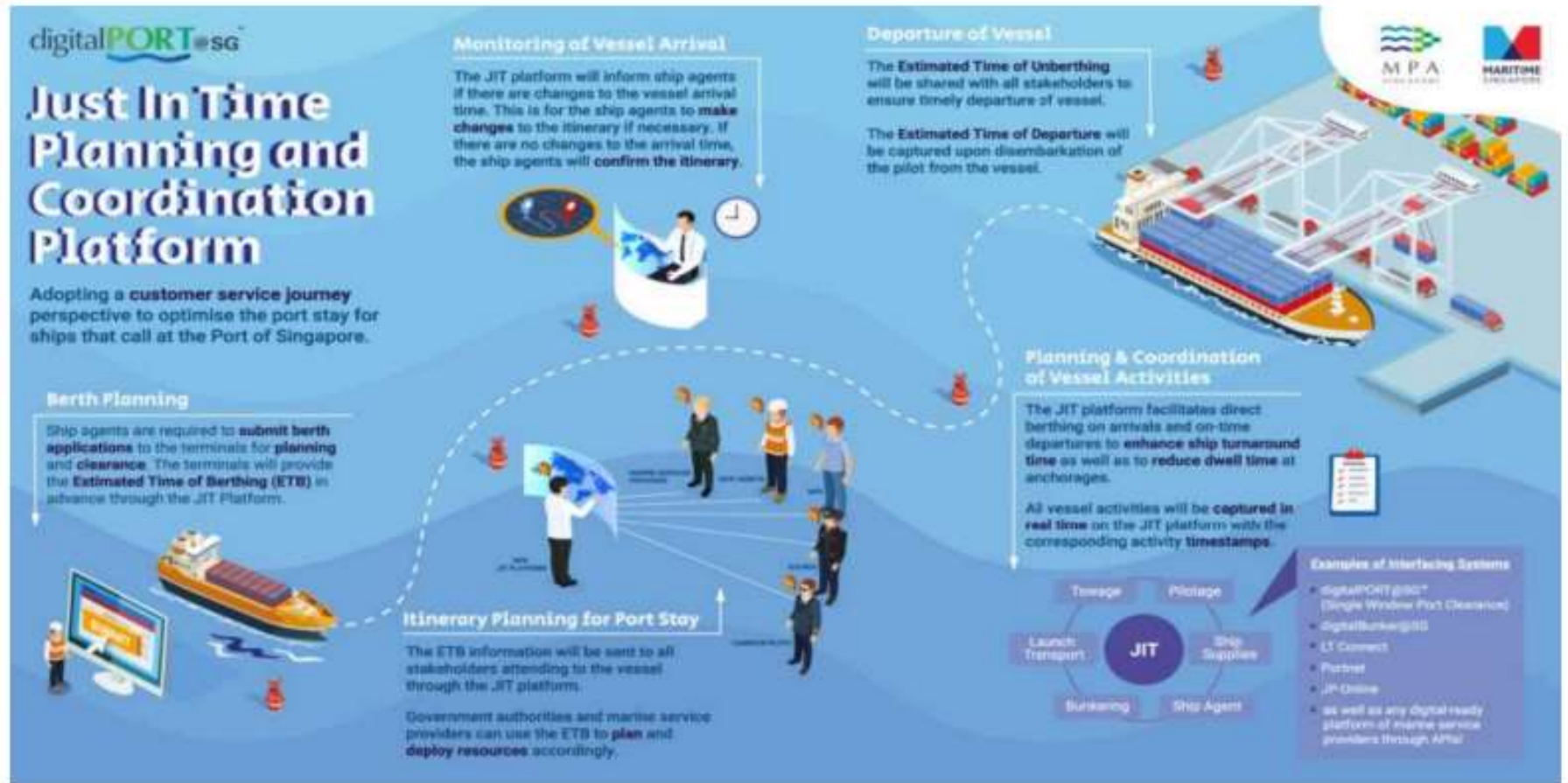
digitalPORT@SG™

Portal for One-stop Regulatory Transactions



digitalPort@SG established robust mechanisms for data exchange with the port community systems facilitating acquisition of pertinent information encompassing declaration related to hazardous goods operations etc.

Singapore



Source: Singapore MPA, 2023

- Phase 2 – commence in 2021 will provide several key functionalities.
 - Facilitation of Maritime Service Bookings
 - Just- In - Time services
 - Application processing interface Integration

digitalPORT@SG™ – A MARITIME SINGLE WINDOW AND MORE

Features



Just-in-Time Services

Enable JIT arrivals, departures and marine services for all stakeholders along the maritime value chain



Sea and Anchorage Space Optimisation

Optimise sea space for competing needs to support future growth



Digital Shopfront for Marine Services

A digital shopfront to easily discover and connect with service providers

digitalPORT@SG™

Just In Time Planning and
Coordination Platform

Benefits

Reduce Carbon Footprints
from shorter ship turnaround time



Optimise Resources
Optimise use of service providers' resources



Greater Visibility
Greater visibility of ship's and port's resources electronically, near real-time



Source: Singapore MPA, 2023



MARITIME SINGLE WINDOW – JAMAICA: Port Community System



- Jamaica's Port Community System was launched in 2015
- First in Latin America and Caribbean
- Recipient of the 2021 Maritime Award of the Americas for Digitalization, Automation and Technological Transformation
- In 2020 Jamaica received international recognition



MARITIME SINGLE WINDOW – JAMAICA: Port Community System



The Port Community System is a **neutral and open electronic platform** enabling intelligent and secure **exchange of information between public and private stakeholders** in order to improve the competitive position of the **sea and air ports' communities**.



It **optimizes, manages, and automates port and logistics processes** through a single submission of data and connecting transport and logistics chains.

JAMAICA PORT COMMUNITY SYSTEM

The Project was initially conceived as a Public Private Partnership

Commercial structure was changed based on outcome of PPP RFP.

PAJ decided to provide resources: Human and Financial

Jamaica Customs Agency is a partner in implementing the PCS

The Port Authority of Jamaica operates the Port Community System Operator department

JAMAICA PORT COMMUNITY SYSTEM

The PCS integrates with 3
government platforms...



THE JAMAICA
SINGLE WINDOW
FOR TRADE



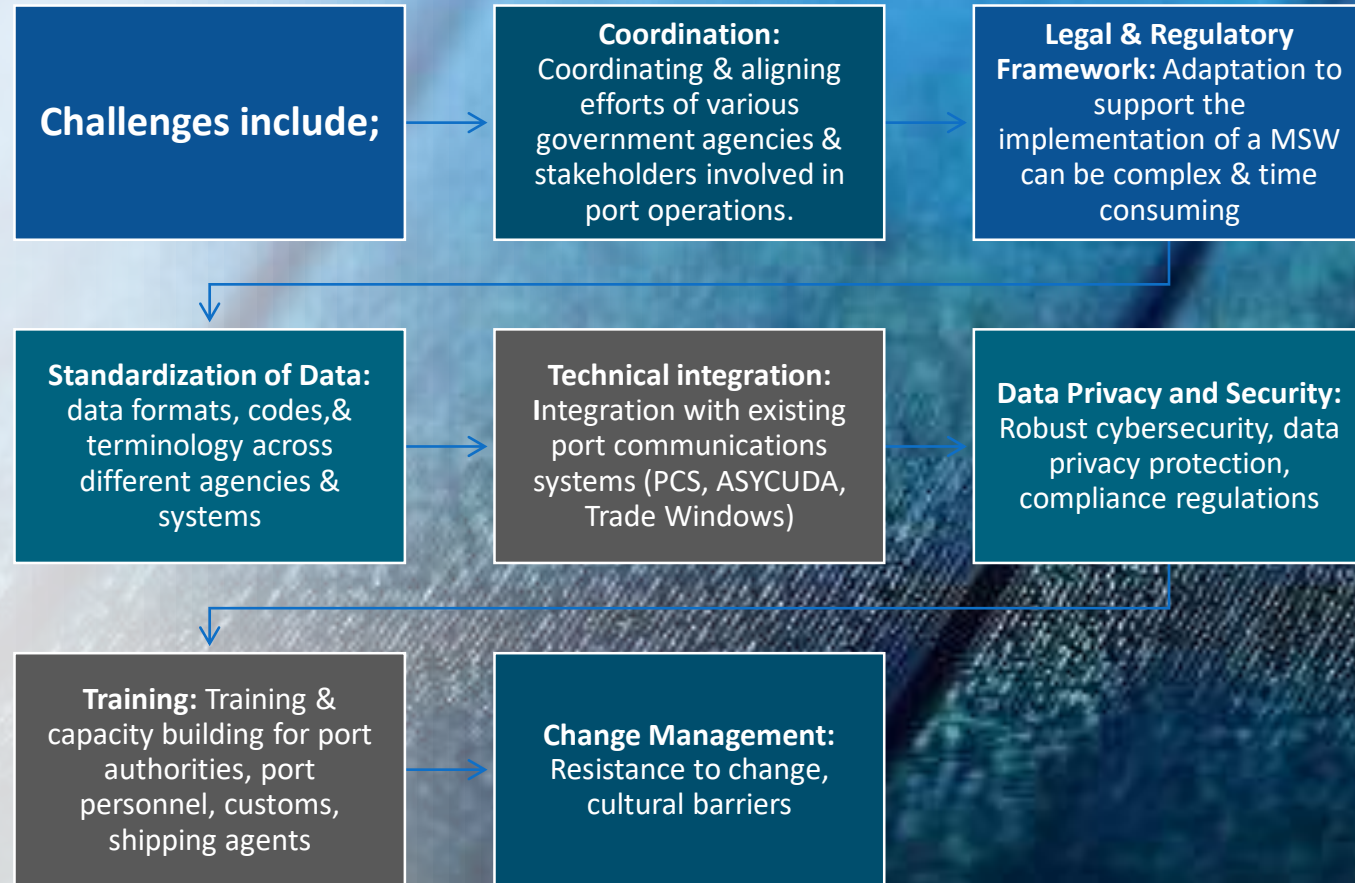
THE JAMAICA
TRADE
INFORMATION
PORTAL



AUTOMATED
SYSTEM FOR
CUSTOMS DATA
(ASYCUDA)

7. CHALLENGES & CONSIDERATIONS

The implementation of a Maritime Single Window has many challenges and requires collaboration with all industry stakeholders, effective project management, robust technical solutions and a good understanding of the complexities of the port environment.



8. BEST PRACTICES AND RECOMMENDATIONS:

Implementation of a MSW can bring numerous benefits and opportunities to ports.

Ports must however ensure that the following best practices and recommendations are considered.

Engage Industry Stakeholders

Conduct extensive Needs Assessment

Foster Inter-agency Collaboration

Standardize Data Formats and Protocol (IMO, FAL)

Legal and Regulatory Alignment

Data Security and Privacy

Capacity Building

Change Management

Monitor and Evaluate

Iterative Development and Pilot Testing

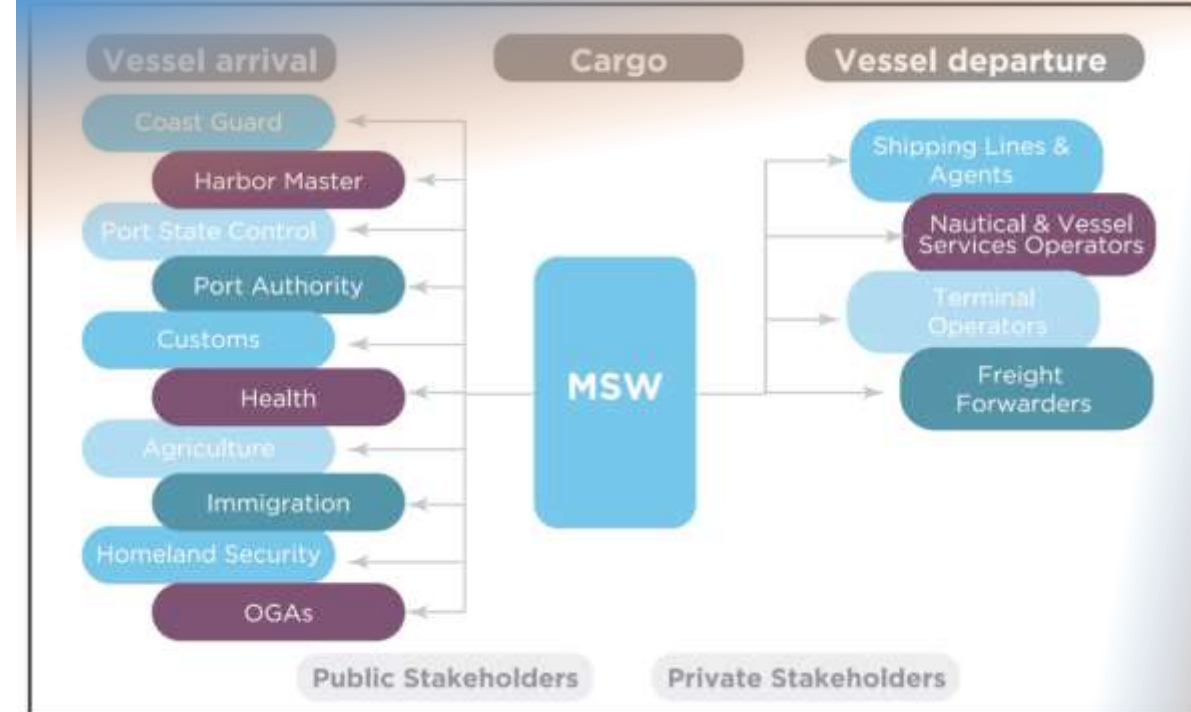
CONCLUSION

MSW aims to streamline and simplify the reporting and data exchange procedures related to the maritime transport and port operations. By **providing a single point of entry for submission of information** the MSW facilitates efficient and seamless communication among stakeholders (ships, port authorities, customs agencies, immigration authorities).

Main objectives of the MSW:

- Simplify reporting procedures,
- Enhance efficiency of ports and associated operations,
- Improve the quality of data,
- Promote transparency and visibility
- Facilitate regulatory compliance and
- Support trade facilitation

Opportunity for ports to **modernize and optimize, promote interoperability** between different systems, and **enhance security and efficiency** of the port operations.





The Port Authority
of Jamaica

THANK YOU



GOBIERNO DE
MÉXICO

MARINA
SECRETARÍA DE MARINA



OAS
More rights
for more people



CIP
Inter-American
Committee on Ports

Christopher Hamilton
chamilton@portjam.com