

Interconnected & Smart Ports

January 18th 2024,
6th Hemispheric Conference on
Logistics, Innovation &
Competitiveness



IPCSA

International Port
Community Systems
Association



NETWORK
OF TRUSTED NETWORKS

Connecting and
sharing data globally
between ports and
cross border

PROTECT



Nico De Cauwer



- IPCSA Secretary-General (since May 1st 2023)
 - official Expert in Transport & Logistics domain within UN/CEFACT
 - Member of IMO's FAL Committee & IMO's Expert Group on Data Harmonization (EGDH)
 - Member of the Data Collaboration Committee of IAPH



- Business Architect Digitalisation & Innovation, Port Community Solutions, within Port of Antwerp-Bruges.



Who is IPCSA ?



IPCSA

International Port
Community Systems
Association



IPCSA
International Port
Community Systems
Association

“A Community of Communities”



52 Members
operating in
over 50
Countries



Members
Operating in
excess of 500 Sea
Air Ports, Inland
terminals &
border crossings



Seaports,
Airports, PCS
Operators,
Single Window
Operators



Over 50bn
electronic
exchanges per
annum and
1.5m+ users



Covering
500m + TEUS
20bn + Tonnes
of cargo

IPCSA MEMBERS 2023



Une Référence Internationale



VISION & MISSION

VISION

The world needs **sustainable, secure** and **seamless** trade and logistics in order to thrive and prosper. Sharing more and better data throughout the supply chain is key in fulfilling this need. We believe that Community systems like PCS's and Single Windows play a vital role in the logistics digital ecosystem and can accelerate the adoption and scale of digitalisation. We believe that IPCSA, as a neutral body, is needed to play an essential role in influencing the conditions for PCS and Single Windows to operate .

MISSION

Make sure that **Port Community System Operators (PCSO), Single Window Operators (SWO)** and **Sea and Air Port Authorities** are able to deliver the maximum value in global and regional trade & logistics by:

“To act in the common interest of IPCSA members to influence public policy at the international level, in order to promote the electronic exchange of information to enable seamless and efficient trade logistics processes. This will be achieved through lobbying, practical initiatives and projects, as well as engagement with the global, regional and national logistics communities and relevant public bodies.”

IPCSA Representation, Collaborations and working relationships



Global & Regional Trade Associations and Organisations



Things to consider when implementing a PCS

Don't think 'technology first': it's not an IT-project but a change management project

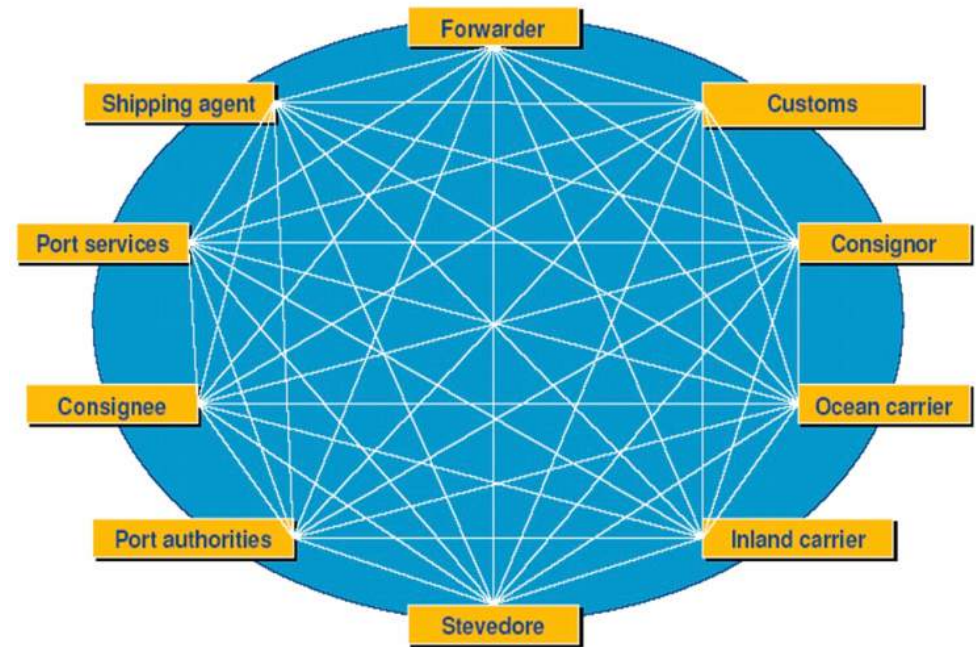
Stakeholder awareness and 'Community building'

Technology comes at the end, proven solutions are there



a Port Community System (PCS) proves its benefits when b2g and b2b processes go 'hand in hand'

Neither of the two or more or less important, but also neither of them should be forgotten



Benefits of a Port Community System (PCS)

PCSs are there as an essential and pivotal part of efficient supply chains.

PCS-services help to **streamline and facilitate international trade operations** by offering :

- **Customs** compliance & clearance
- Import & Export **Documentation**
- **Maritime** services for arrival, stay and departure of vessels in a port
- **Cargo** services for (un)loading and gate-movements

- Other transparency and **visibility** services
- Other regulatory **compliance & reporting**

Smart Ports / Port of the Future

-

Innovation in action

How does a port gives shape to the concept
of a Smart Port ?

an example from the



**Port of
Antwerp
Bruges**

Ports are a catalyst
towards a
sustainable future





“We must dare to pioneer”



Role of digitalisation ?

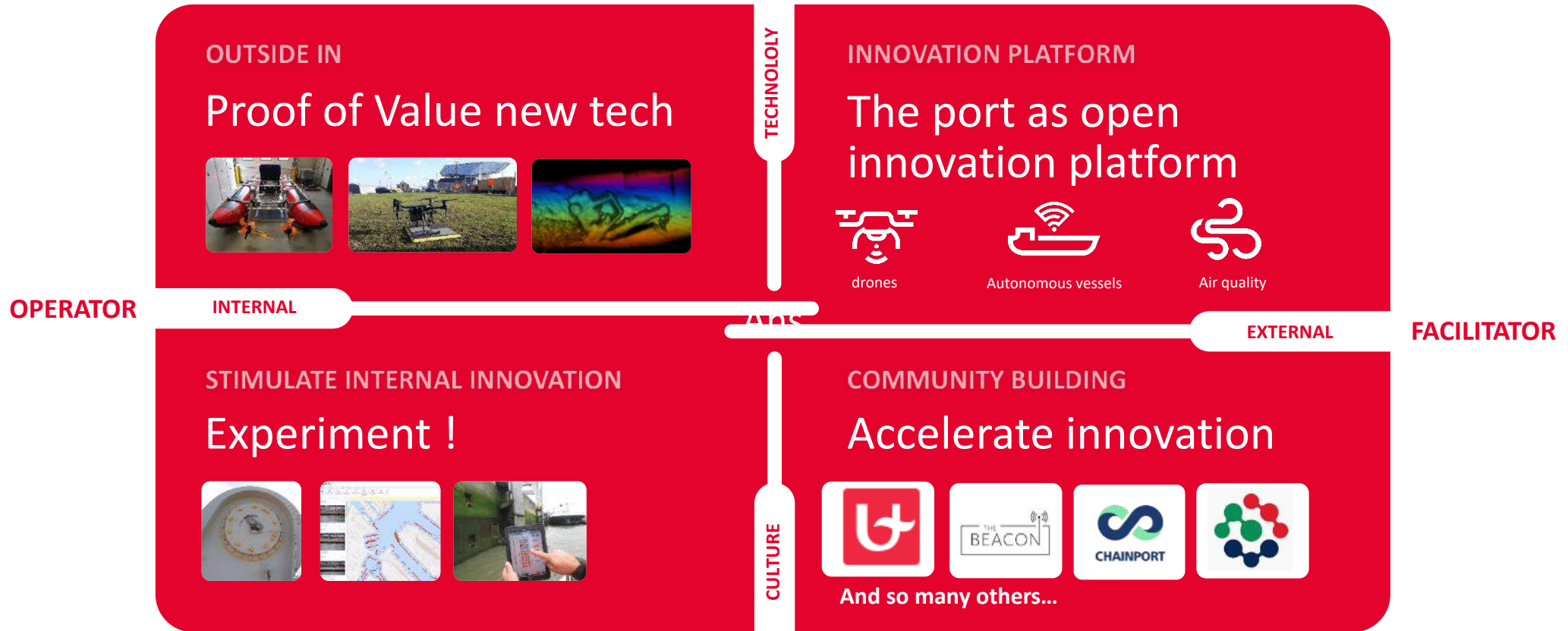
**Vision without action is a pipe dream,
Action without vision is a nightmare**

(Japanese proverb)



Our digital innovation strategy

Make the journey towards a 'smart port' actionable

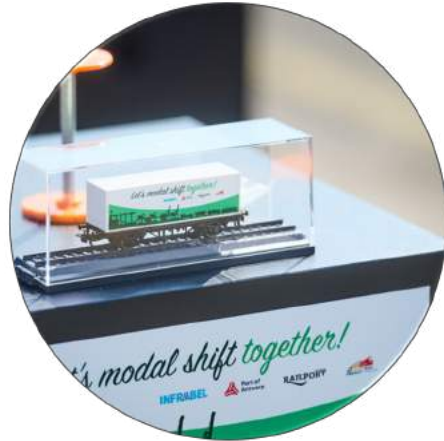


The smart port defined

Five foundational pillars guarantee the long-term impact



Integrated port operations



Adaptive modal shifts



Cybersecurity



Impact on climate and ecology



Digital talent and ecosystems



DIGITAL NERVOUS SYSTEM

sensor devices inspired by the five senses

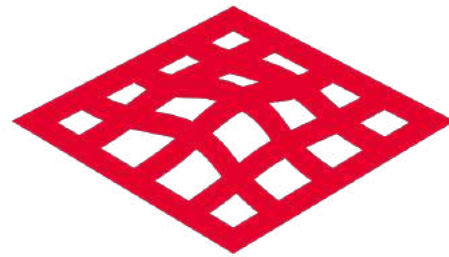
The metaphor to make a smart port tangible

Digital nervous system for efficient, safe and sustainable operations



Drones

To extend our reach



Sensors

To collect relevant datasets



5G / Lora

For real time access to data and video feeds



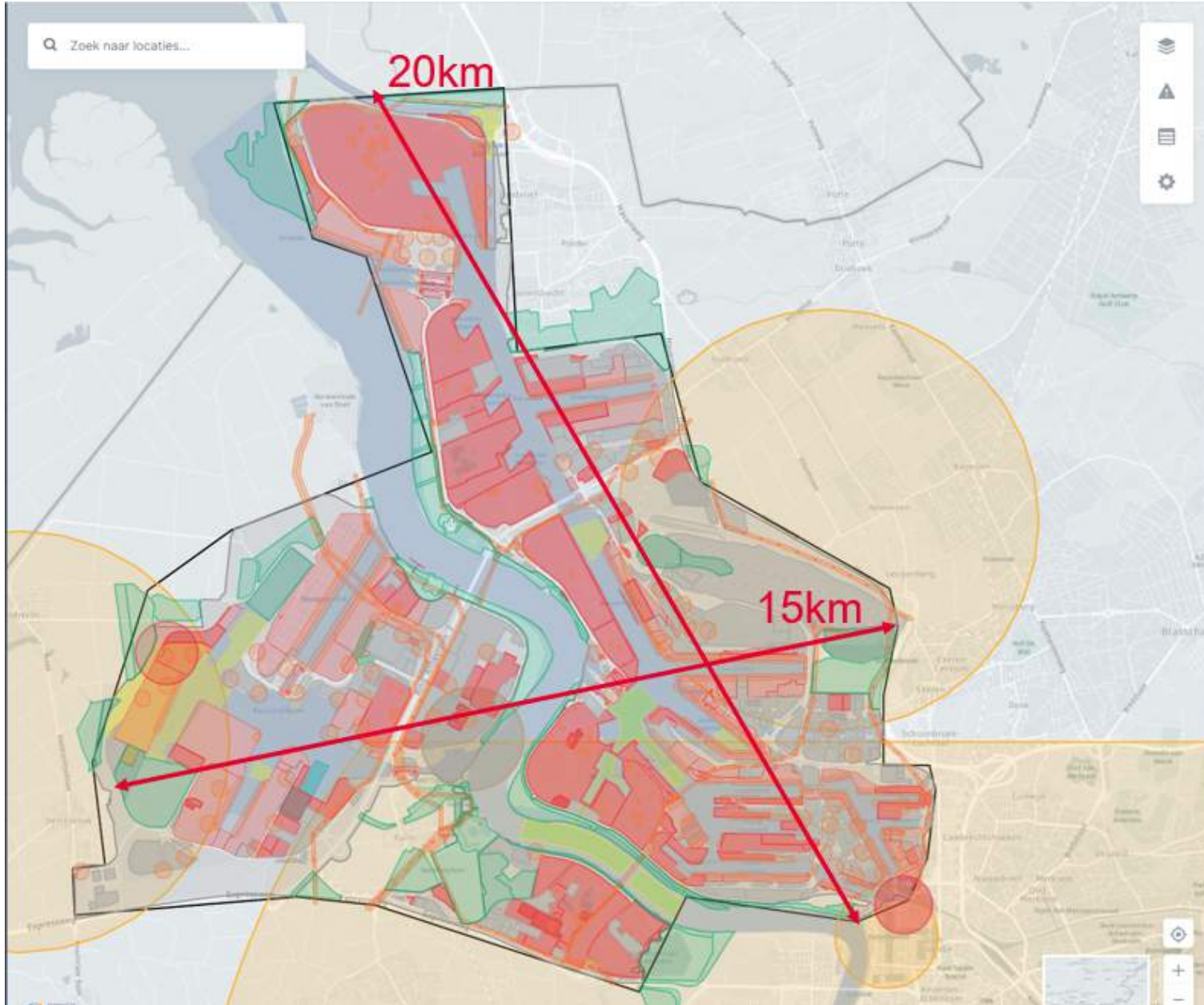
Digital twin

For situational awareness in context tailored to the need of the target audience



DRONES

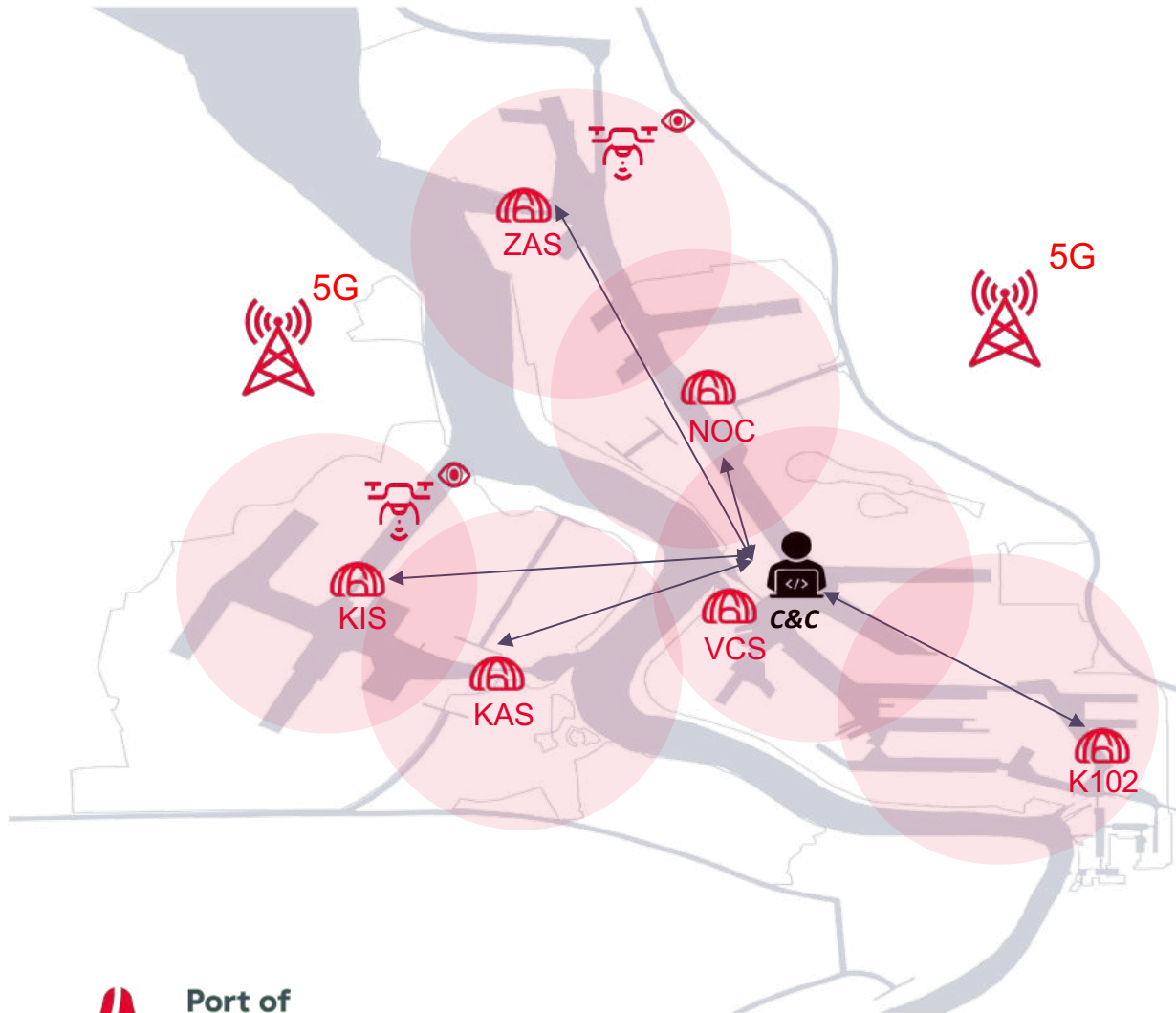
Port of Antwerp-Bruges Geozone



- 120km² port area
- 2^{de} largest seaport in Europe
- 900+ companies
- 15000 seagoing vessels & 50000 inland vessels/year
- Second largest chemical hub in the world
- 60+ windmills
- 1 airport (CTR-overlap)
- 2 airfields / 2 heliports
- Nuclear Powerplant
- High tension lines
- Nature reserves

Complex Port Area & **Geo Zone**

Fast forward to 2023



- Network of **automated** drones in PoAB
- Drone as a service: 18 flights a day 24/7
- Authorization to fly above water - BVLOS
- Central coordination and control center
- Communication via dedicated 5G network





- BVLOS & ATOL
- 8km radius
- 30min flight time
- >7Bft & IP55
- RGB & IR 4K-video
- Integration in port camera network
- 6 base stations throughout the port



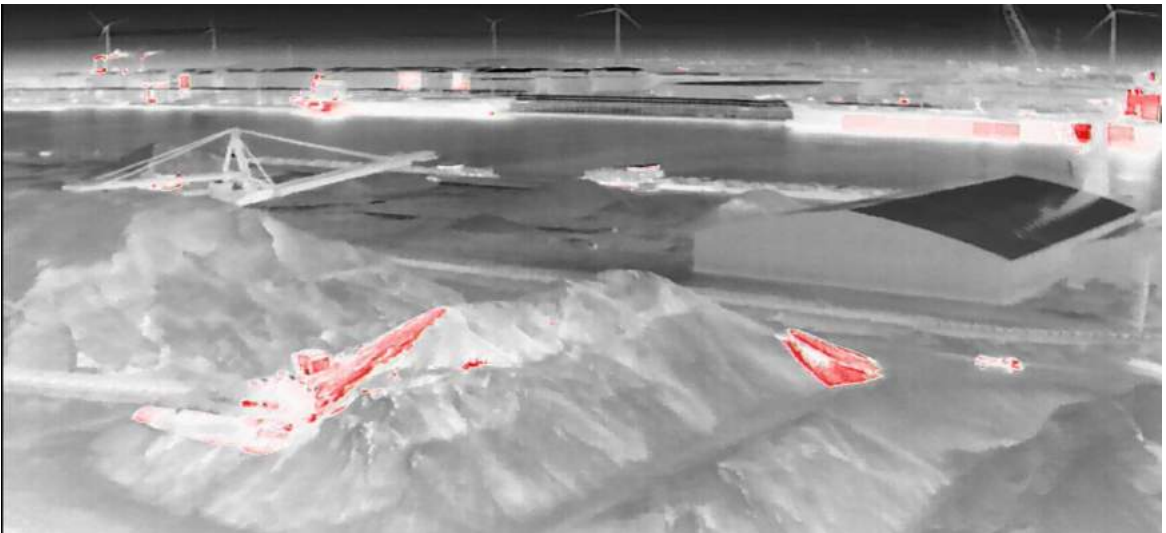
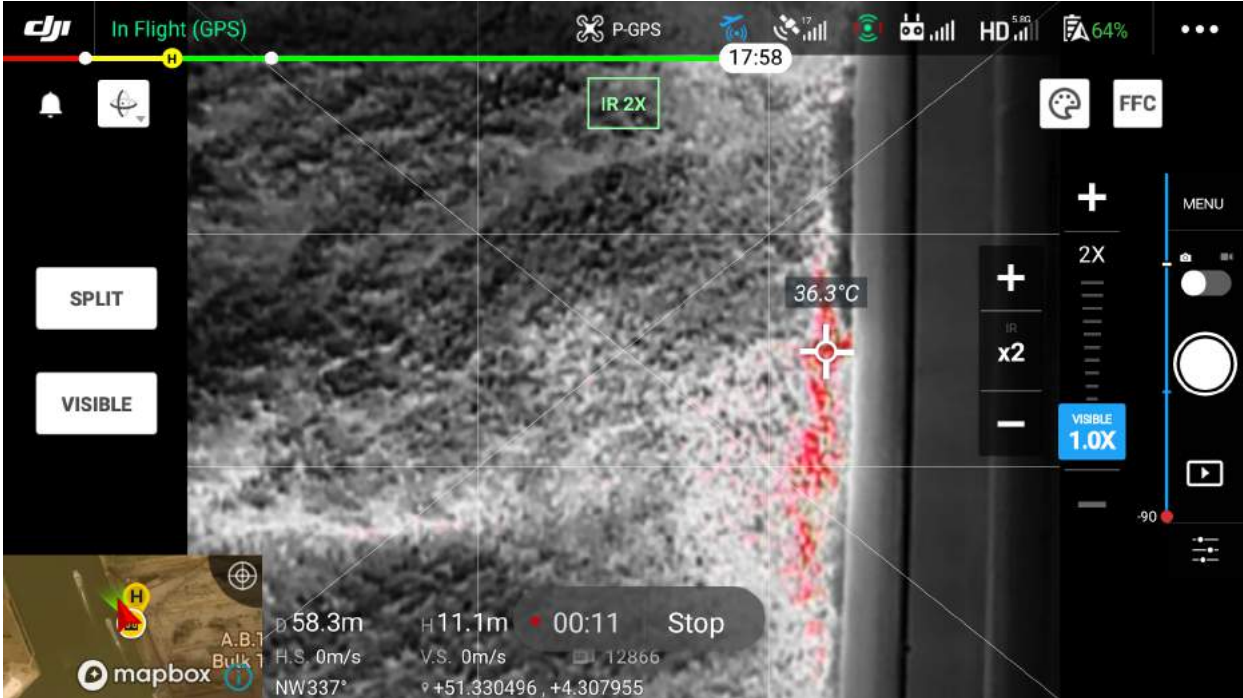
Port of
Antwerp
Bruges





Incident prevention

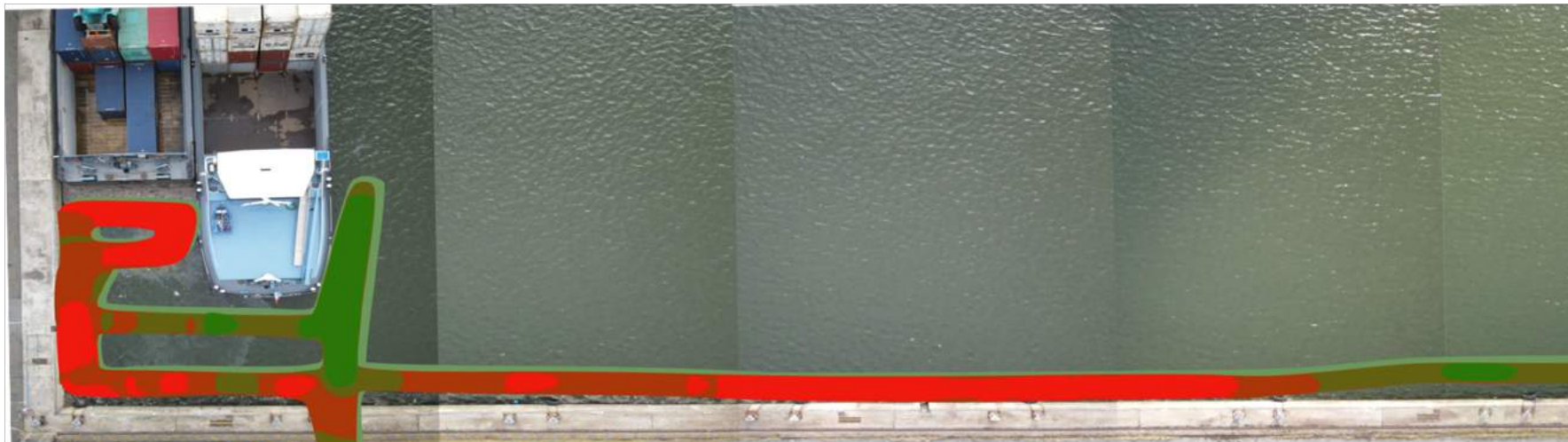
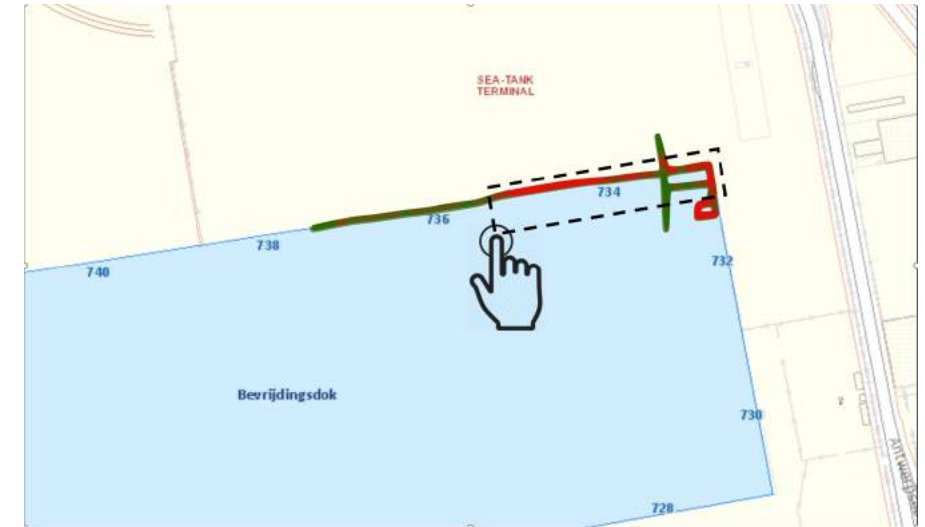
Potential heat pocket detection in coal ore cargo



Floating debris detection



Computer Vision of floating debris detection



Infrastructure inspection





INTERNET
OF THINGS

Smart Docking

*Measuring movements of
moored
container ships*



Port of
Antwerp
Bruges

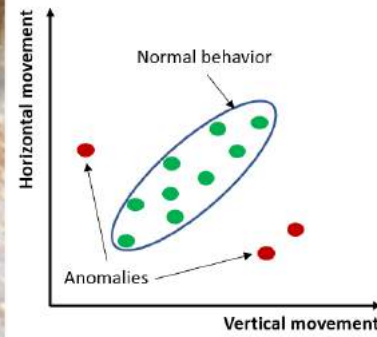
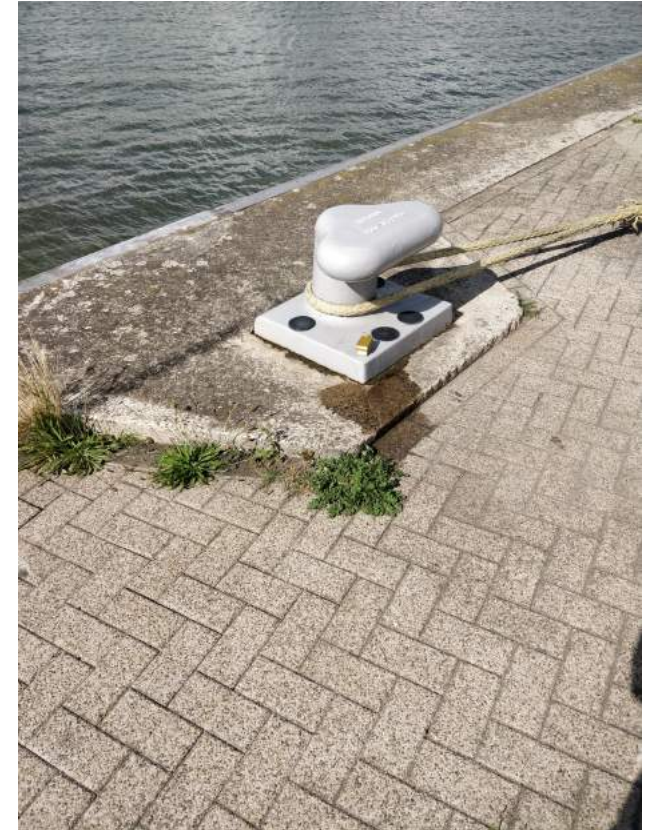
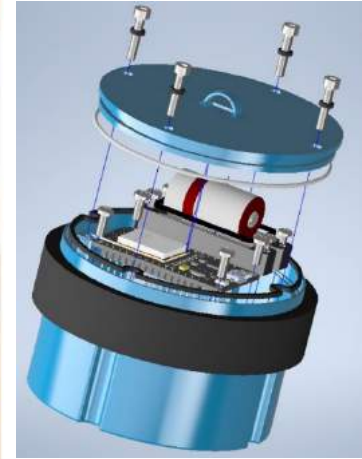
Smart Bollards

innovative alert system



Port of
Antwerp
Bruges

iBollard: innovative alert system



Wireless accelerometer & intelligent data processing

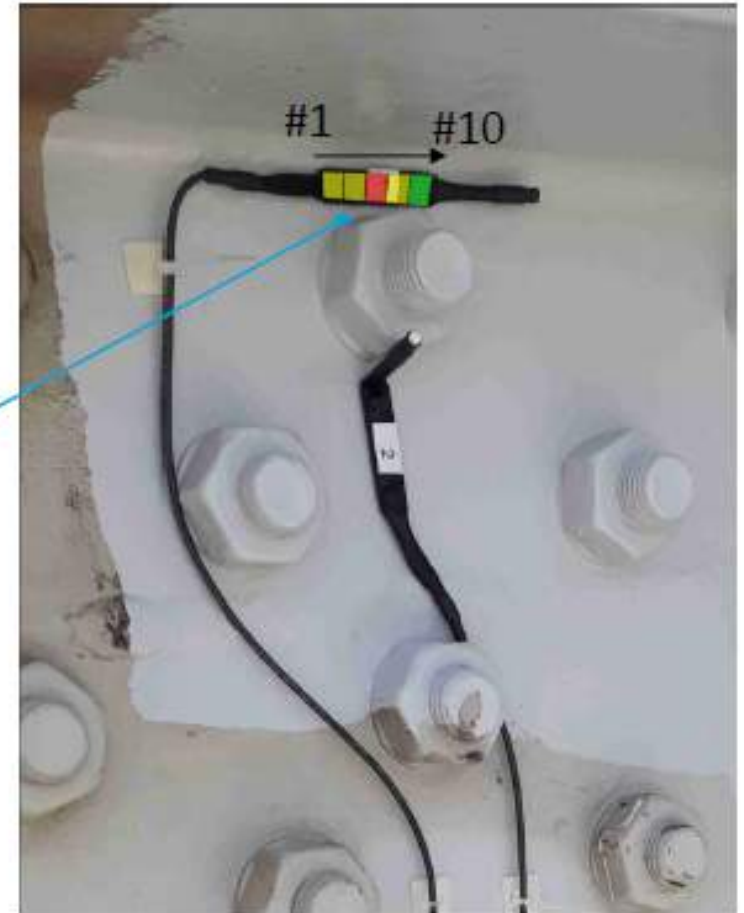
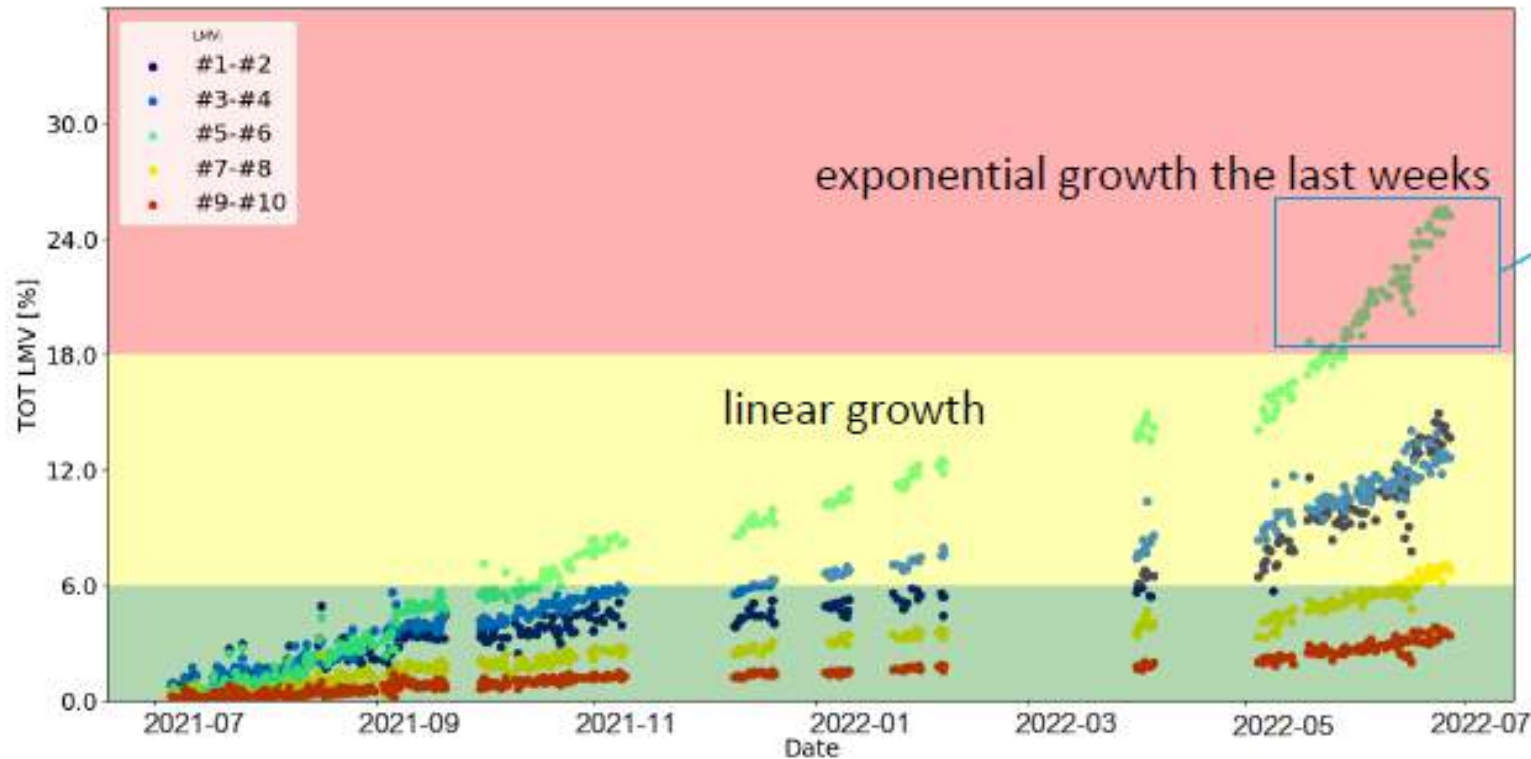
Bridge Monitoring



Port of
Antwerp
Bruges

Bridge Monitoring: monitoring crack growth using variations in the magnetic field

- : RFV2.20210104 | Strip 1
 - Exponential change of the field the last weeks



AI inspections



Port of
Antwerp
Bruges

Jetty inspection with water drones & AI



OVERVIEW 3D MODEL DATA REPORTS

Damage Count

Category	Count
Exposed M	468
Missing Co	429
Acid Attack	1052
Early Expos	813
Crack	871

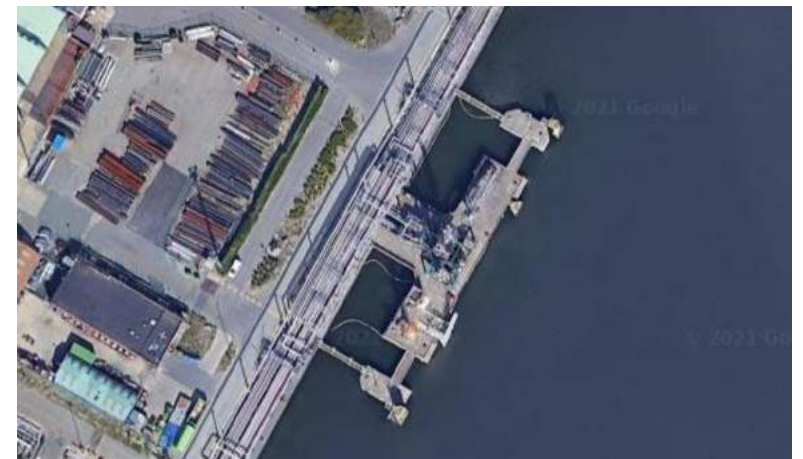
Asset Health

Health Status	Count
A+ (Good)	529
A (Low)	1200
B (Medium)	573
C (High)	0
D (Very high)	0

Name	Marshalldok Inspection New
Status	● Inspection Complete
Inspection	23-08-2021
Report	report_667.pdf
Uploaded	200

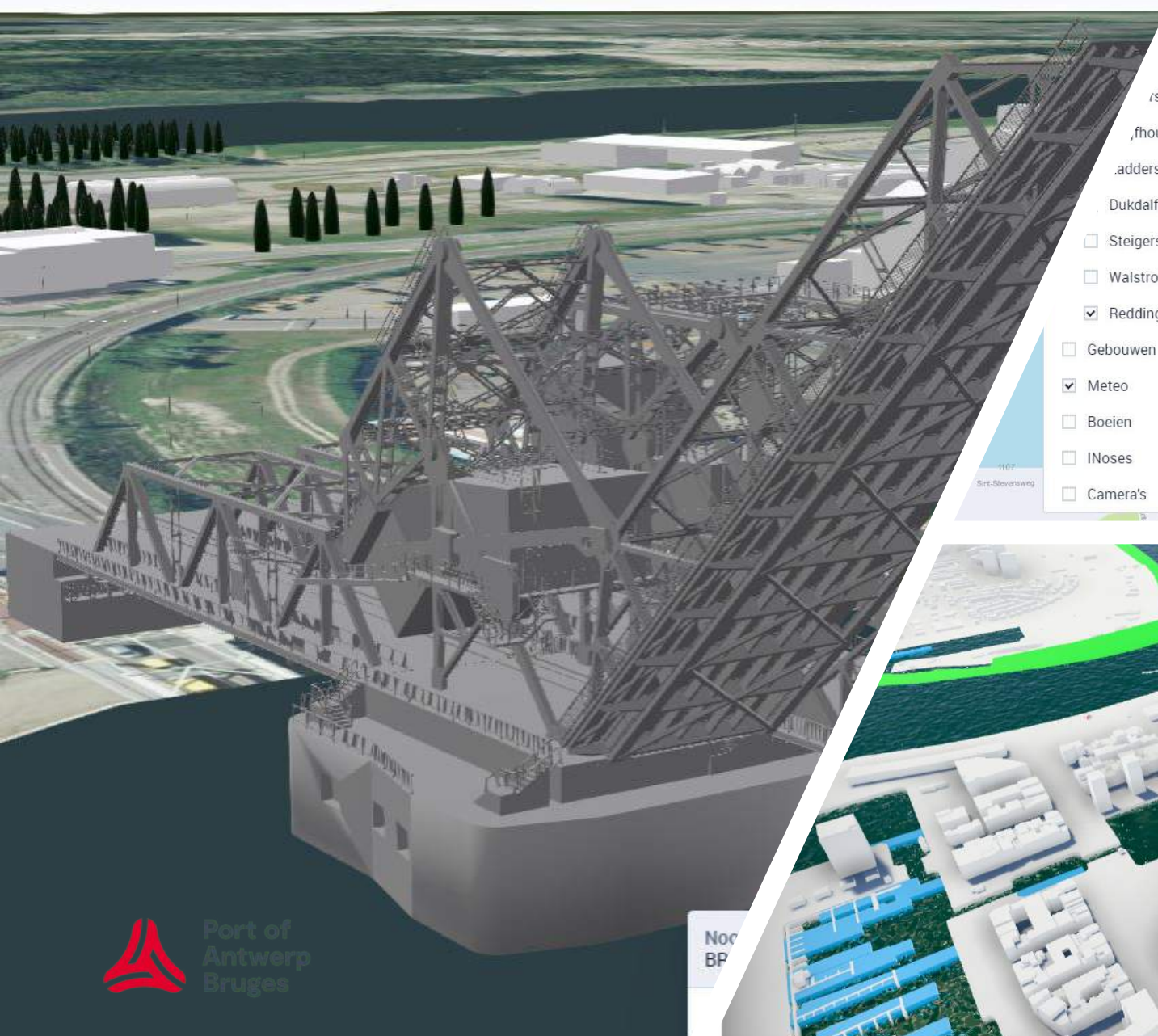
Damages Validated

1%

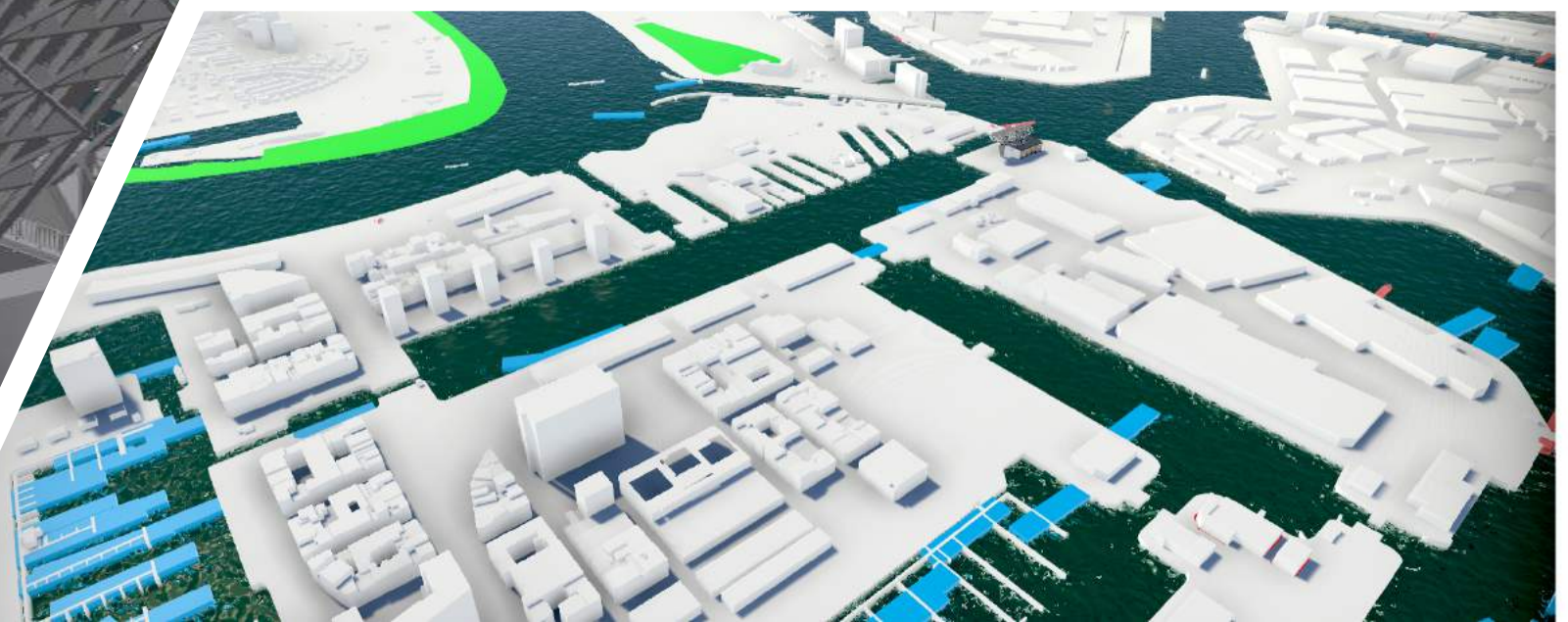




A twin of the port: from analog to digital



- ructuur
- ooten
- n
- s
- fhouten
- adders
- Dukdalf Installaties
- Steigers
- Walstroomkasten
- Reddingskasten
- Gebouwen
- Meteo
- Boeien
- INoses
- Camera's



CAPSTONE PROJECT



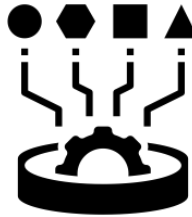
SENSORS



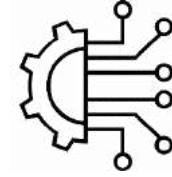
CAMERA



ENTERPRISE
ASSET
MANAGEMENT



DATA PLATFORM



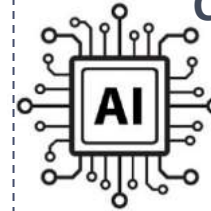
COMBINED
DATA



FIBER



TIMESERIES



MACHINE
VISION



RADAR



DRONE



NAUTICAL
PLANNING



OWN DATA



USER
EXPERIENCE



NETWORK
DATA STREAMS



GEOSPATIAL



THIRD PARTY
DATA



REAL
TIME







MPIC



Leveraging the power of data



we don't need one single key
that fits all ...

... but we need everyone's
key to open the (supply)
chain !!

It's all about “the ease of doing business” and a PCS is just that

and don't forget:
“You need to change, in order to stay the same !”

If you're ready to embark on your PCS or Single Window journey, join the IPCSA Family 🦊 !

THANK YOU

Please send e-mails or questions you may have
as we always are welcome for discussion and collaboration



IPCSA

International Port
Community Systems
Association



NETWORK
OF TRUSTED NETWORKS

Connecting and
sharing data globally
between ports and
cross border

PROTECT

Nico De Cauwer

Secretary-General, IPCSA

nico.decauwer@ipcsa.international

<https://ipcsa.international>