



DP WORLD

01

SUSTAINABILITY @ DP WORLD





AGENDA

- ❖ ABOUT DP WORLD
- ❖ PLACING SUSTAINABILITY @ THE HEART OF OUR BUSINESS
- ❖ DPW PARAMARIBO
- ❖ SUSTAINABILITY IN ACTION

ACROSS OUR GLOBAL NETWORK



10%+

OF WORLD TRADE
MOVES THROUGH
OUR NETWORK



76+

COUNTRIES



103,000

EMPLOYEES



92M TEU

GLOBAL CAPACITY



\$37BN

CAPITAL EMPLOYED



An abstract 3D visualization of data or supply chain flow. The background is a dark blue gradient. On the right side, there are several clusters of data points: a large cluster of blue spheres at the top, a cluster of green spheres in the middle, and a cluster of red cubes at the bottom. A thick, multi-colored stream of lines (orange, red, yellow) flows from the top right towards the center. The overall effect is a dynamic, multi-colored data visualization.

**OUR VISION IS TO PROVIDE AN END-
TO-END SUPPLY CHAIN SOLUTION**

From Factory Floor to Customer Door

WE HAVE SOLUTIONS FOR EVERY PART OF THE SUPPLY CHAIN



TECHNOLOGY-LED SOLUTIONS TO REDUCE INEFFICIENCIES ACROSS THE SUPPLY CHAIN

Visibility and transparency, automated planning, digital rates, instant access and control, trade finance and insurance, enterprise IT solutions and systems plus B2B eCommerce.

BRINGING TOGETHER OUR SUPPLY CHAIN SOLUTIONS

PORTS & TERMINALS

Our Ports and Terminals are gateways that open global trade and make it flow more freely.

Our network spans the globe, opening up routes to underserved markets and innovating supply chain solutions that unlock more trade around the world.



MARINE SERVICES

Our wider Marine Services meet highly specialised customer needs in a range of shortsea, offshore and in-port contexts.

From feeding to port services and vessel support, we enable creative and novel approaches to moving goods beyond the port for the benefit of businesses and consumers alike.



LOGISTICS

We use our expertise and infrastructure to connect and simplify global supply chains provide services that drive agility, flexibility and reliability across the supply chain – helping goods to flow faster, smarter, and more sustainably than ever.



TECHNOLOGY

We are transforming the global supply chain, using cutting-edge technology to revolutionise how goods and communications flow.

This ranges from financing your shipment and making your supply chain more resilient, to expanding into new markets and opportunities for businesses of all sizes.

02

PLACING
SUSTAINABILITY
@ THE HEART OF
OUR BUSINESS



A close-up photograph of a hand holding a single water droplet just above a small, vibrant green seedling that is growing out of a mound of dark, rich soil. The background is a soft, out-of-focus green, suggesting a natural, outdoor setting. The lighting is bright, highlighting the texture of the soil and the freshness of the plant.

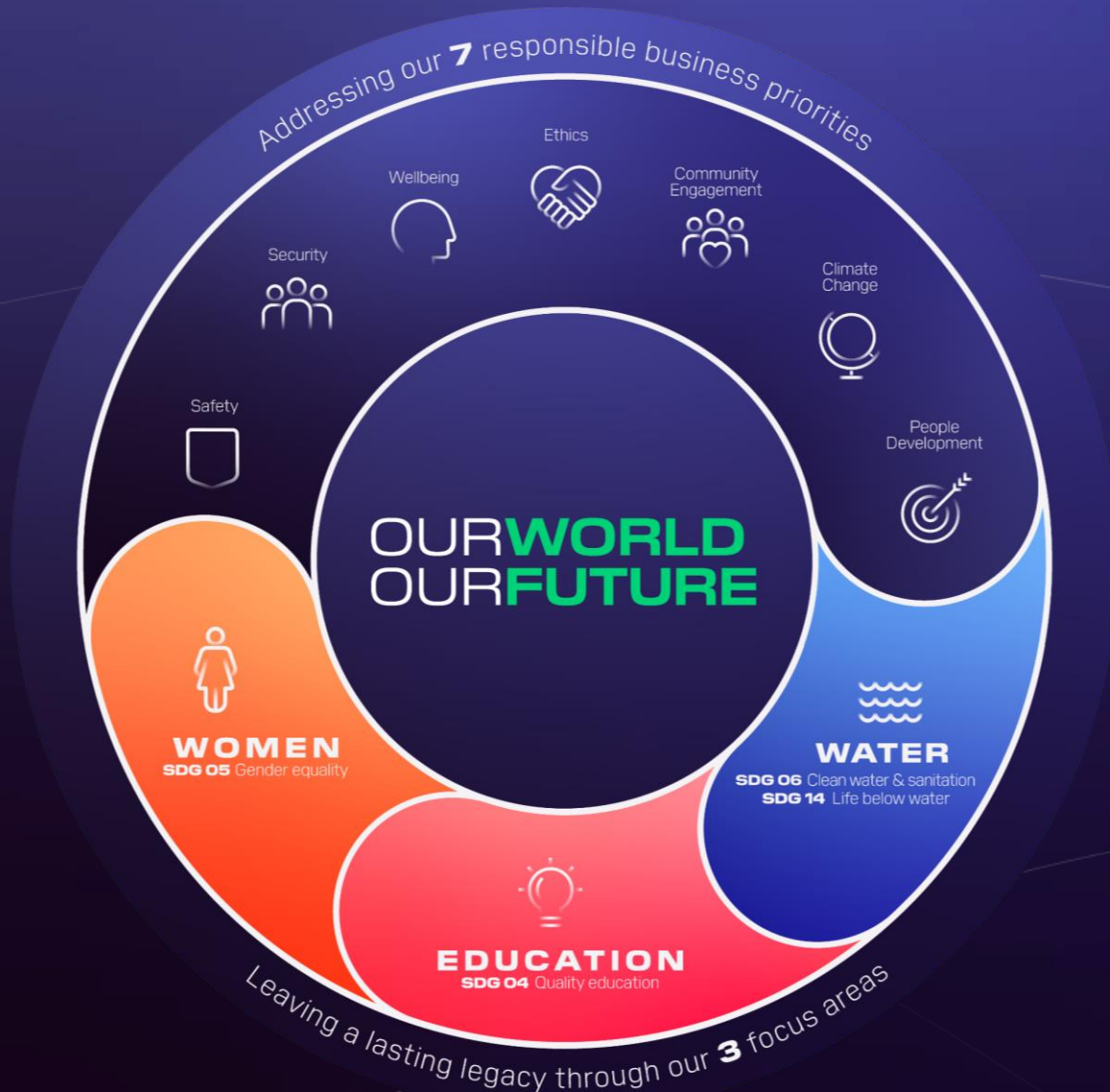
SUSTAINABILITY

Protecting our people and planet today for a better tomorrow.

OUR APPROACH TO SUSTAINABILITY

- As a global logistics leader, DP World enables smarter trade to create a better future for everyone.
- DP World's 'Our World, Our Future' sustainability strategy guides our approach.
- work in a responsible way that prioritizes sustainability and impact on the people, communities and environment in which we operate.
- Use of new smart technologies makes our operations more sustainable.
- In doing so, we cut energy and resource use, and create a fairer and more connected planet.
- Designed to deliver responsible operations.
- prepares us for a radical shift in how business in general, and logistics in particular, respond to the great challenges of climate change, education and social inequality.

OUR WORLD, OUR FUTURE



Our 7 responsible business Priorities:

- Safety
- Society
- Ethics
- Community engagement
- Wellbeing
- Climate Change
- People development

Leaving a lasting legacy – 3 focus areas:

- Women
- Education
- Water



DP WORLD GLOBAL

2023 Sustainability Highlights and Achievements

New Commitments



The CEO Water Mandate

Positively contribute to 100 water-stressed basins by 2030

Committed to the Climate Action and Water Resilience areas of action



First Movers Coalition

5% of marine power coming from zero-emission fuels by 2030

Forbes Middle East

Ranked #1 in Transport and Logistics Sector in Sustainable 100

Sustainable Finance



USD 1.5bn 10-year Green Sukuk; largest Green Corporate Sukuk tranche globally

ESG Ratings

SUSTAINALYTICS
Top rated - Region
Top rated - Industry

ESG Risk Rating
8.8

ecovadis

First time rated



Principal Pathway Partner advocating for ambitious climate action and positive change

Supported over 55k rural residents in Rwanda by the construction of 17 bridges



Bridges to Prosperity



In Mozambique, started construction of 3 water supply systems and waste management units

Thought Leadership



Published several papers in the run-up to COP28

Policy Advocacy



Launched the ZEPA, an industry wide alliance, to act as a catalyst for zero-emission ports

Launched the Move to -15°C campaign and brought industry leaders together



Signed a MOU to jointly develop green solutions to decarbonise global supply chains

Climate and Environment

13% Reduction in Scope 1 and 2 emissions from baseline



Scope 1, 2 and 3 carbon emissions annually assured

60% Globally sourced electricity from renewable energy



Launched largest double-ended hybrid ferry in Dover



DP WORLD

DP WORLD SUSTAINABLE
DEVELOPMENT IMPACT
DISCLOSURE

TO VIEW REPORT
SCAN ME!



SUSTAINABLE DEVELOPMENT IMPACT DISCLOSURE

Context Report 2024

- DP World ESG report YoY published since 2020 with comprehensive ESG scorecard
- DP World is a pioneer by launching it's SDID Report
- SDID intends to disclose and highlight organizational impact through expansion and modernization in the global south (Africa & Asia)
- Analysis focused in 2024 on India and Africa (Somaliland, Egypt, South Africa and Senegal)
- Characteristics SDID:
 - Assesses DPW overall strategy impact in country of Focus
 - Impact oriented: focus on output/outcome rather than taxonomy of sustainability activities and investments
 - Forward looking: establish targets that measure impact
 - Context specific: tailors framework to account development gaps in local jurisdictions

03

DP WORLD PARAMARIBO



DP WORLD PARAMARIBO



PORT & TERMINALS IPS



Located @ Jules Sedney Port

- ✓ Multi Purpose Terminal
- ✓ Full & Empty Container stack
- ✓ CFS services
- ✓ Upgrade to Port Centric Logistics services



PORT & TERMINAL SPS



Located @ La Vigilantia, Paramam approx. 25 km from Paramaribo

- ✓ Upgrade facilities (electrification, cabins, HSE standards, CCTV, Zodiac GC)
- ✓ Conveyor Belt operations
- ✓ Extension Area
- ✓ Customer contracts
- ✓ New Equipment vs contractors`



LOGISTISC SURINAME



End to End Solutions - Logistics services

- ✓ Storage facility: customs bonded warehouse
- ✓ Freight Forwarding: Air/Sea
- ✓ Customs and Vessel Clearance
- ✓ Vessel Brokerage
- ✓ Agency services
- ✓ 3rd party logistics partners in the region
- ✓ USA/Europe/Asia Trade development

04

SUSTAINABILITY IN
ACTION
@ DP WORLD
PARAMARIBO



❑ 3% YOY CARBON EMISSION REDUCTION

❑ EQUIPMENT ELECTRIFICATION

❑ PROCESS EFFICIENCIES & DIGITALIZATION

HEALTH, SAFETY & ENVIRONMENT



Commitments We Live By

Compliance with DPW Global HSE Standards



Fundamentals



Pedestrian Protection



Working At Heights



Mobile Equipment



Energy Isolation



Handling loads

- ✓ Zero Harm Policy
- ✓ Safety Engagement
- ✓ Incident Management
- ✓ INTERNAL & EXTERNAL AUDITS
- ✓ Quality Management Systems



OUR WORLD OUR FUTURE

TALENT MANAGEMENT

- ❖ Individual Development Program
- ❖ Sustainable Training Program –ATAP, FTO/STO/MTO
- ❖ Leadership Development
- ❖ Succession



GLOBAL EDUCATION PROGRAM

Educate and interest youngsters to join the Maritime Sector

- Active internship engagement: YOY 5-10 interns
- World Maritime Day – Education event
- Engineering Contest – for students
- Education Road trips – sessions @ education institutes
- Participation in youth fairs (recruitment event, SEOGS)
- Student Port Tour participation



WOMEN EMPOWERMENT

- Mentor HER Program
- WOB Program - for selected senior Female leadership
- DPW Women Business Network
- Talent acquisition – active female onboarding for a well-balanced workforce
- Female Participation on Speakers Platforms
- Participation in Wamac Chapter Suriname
- Active Celebrating - Women in Maritime days

PEOPLE & ETHICS

FRAUD RISK POLICY



Our goal in Fraud Risk Services is to do all we can to combat fraud in every form. We all need to be aware of the risks associated with occupational Fraud; how we can spot them; and more importantly, how to stop them.



DIVERSITY & INCLUSION POLICY

A DIVERSE WORLD, A STRONGER FUTURE

COMMUNITY ENGAGEMENT OUR COMMITMENT TO THE COMMUNITY

DP World's 'Our World, Our Future' sustainability strategy helps us to work in a responsible way that prioritizes sustainability and impact on the people, communities and environment in which we operate.

DP World's Sustainability strategy is split into two components which aligns with the UN Sustainable Development Goals.

The first, 'Our World', focuses on the efforts we are making today to operate as a responsible business across seven priority areas. The second part of the strategy, 'Our Future', looks at the legacy we will leave on our industry and society.



DP WORLD

**SUSTAINABILITY & IMPACT
2023 YEAR REVIEW**

50 VOLUNTEERS
Total numbers of employees who participated in the Sustainability & Impact activities

14 ACTIVITIES
Total numbers of Sustainability & Impact activities carried out

1042 VOLUNTEER HOURS
Total number hours employees volunteered during and after work

2438 PERSONS
Estimated total number of people directly benefiting from the Sustainability & Impact activities

OUR WORLD OUR FUTURE



DPWP SUSTAINABILITY CHAMPS 2024

- ✓ Dedicated Team
- ✓ Community Engagement
- ✓ Sustainability Budget Review

- ✓ Project Proposals review
- ✓ Sustainability Project Coordination
- Department support

SHE AS A BEACON CAMPAIGN 2024





DP WORLD

THANK YOU