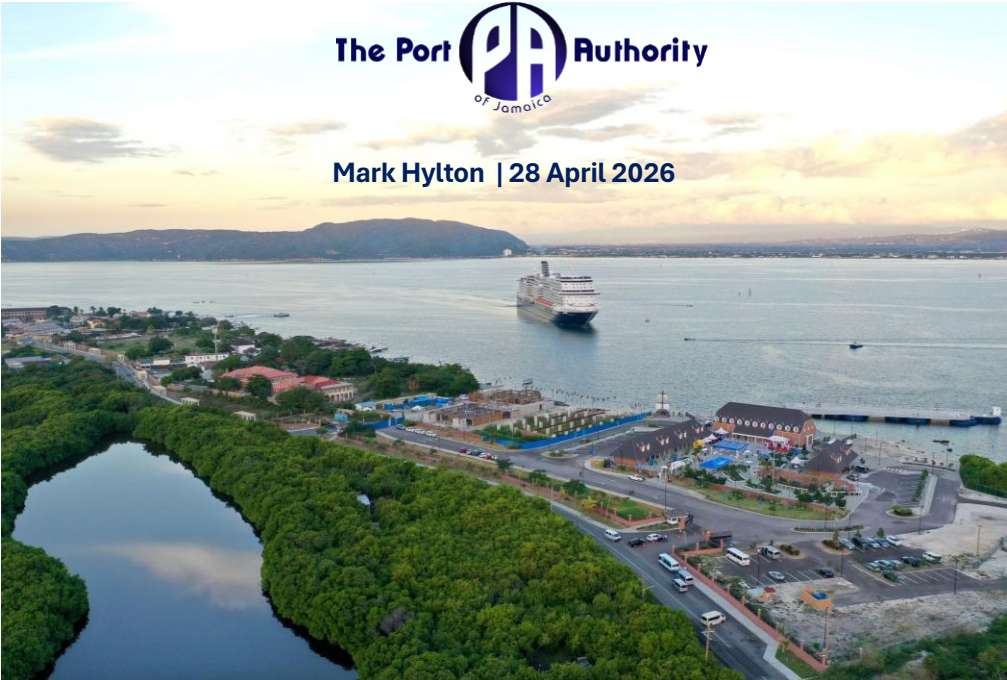




Stronger than Storms: Port Resilience in Action



The Port  Authority

Mark Hylton | 28 April 2026



OAS



Agencia Nacional
de Puertos y Navegación



CIP
Inter-American
Committee on Ports



CARGO



CRUISE



BPO



LOGISTICS



HARBOURS & PORTS SERVICES



Business segments influenced by various challenges:

1. Climatic conditions
2. Pandemics
3. Global security
4. Maritime Incidents & Accidents
5. Geopolitical

PAJ Action Strategies

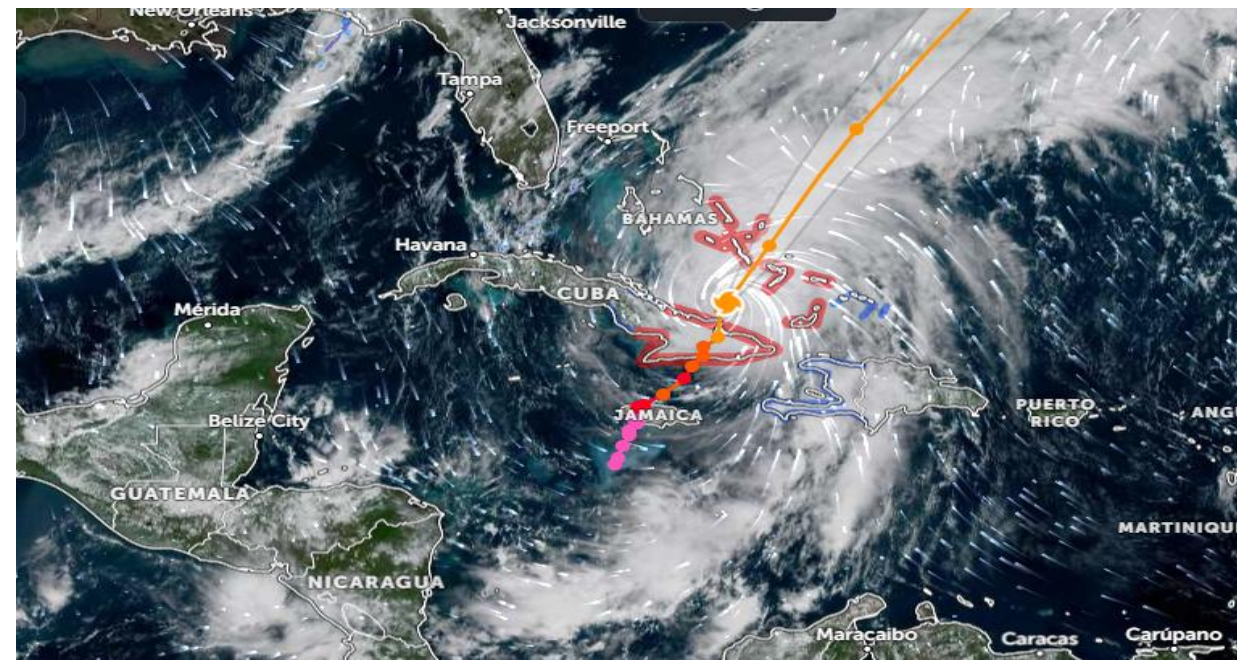
Focused efforts on:

1. Human resource capacity building
2. Product resilience & diversity
3. Business continuity
4. Global best practices
5. Community sustainability
6. Inter-agency collaboration

Hurricane Melissa Impacts

- **Oct 28, 2025, landfall in Jamaica (Category 5)** at 12:30 PM on SW coast
 - exited NW coast near Falmouth 4.5 hours later
- Windspeed 190mph (gusts 252 mph).
- Harbours closed: Noon on 24 Oct 2025.
- Westen end of island devastated.
- 20 unavoidable cruise cancellations.
- **Harbours reopened starting from 29 Oct 2025 (Kingston); Montego Bay (31 Oct 2025).**
 - *All ports & harbours open by 03 Nov 2025.*
- Rapid recovery efforts, coordinated partner support led to efficient restoration of operations.

Ships returned to Jamaica less than two weeks post-Melissa



I am watching what is going on every day. I must take my hat off to you, your team, the PAJ, and others in Jamaica.

When you consider the catastrophic strength of the hurricane, the damage it did to the country and impacted so many lives, AND the timing of the hurricane, remarkably, you are almost fully operational as a cruise destination 35 days after the storm hit, and what a storm it was.

— Cruise Consultant, G.Israel pers. comm



HURRICANE MELISSA IMPACTS ACROSS PAJ FACILITIES



Feb 2024

Demolition

ORCT

Pouring

Reynolds Pier

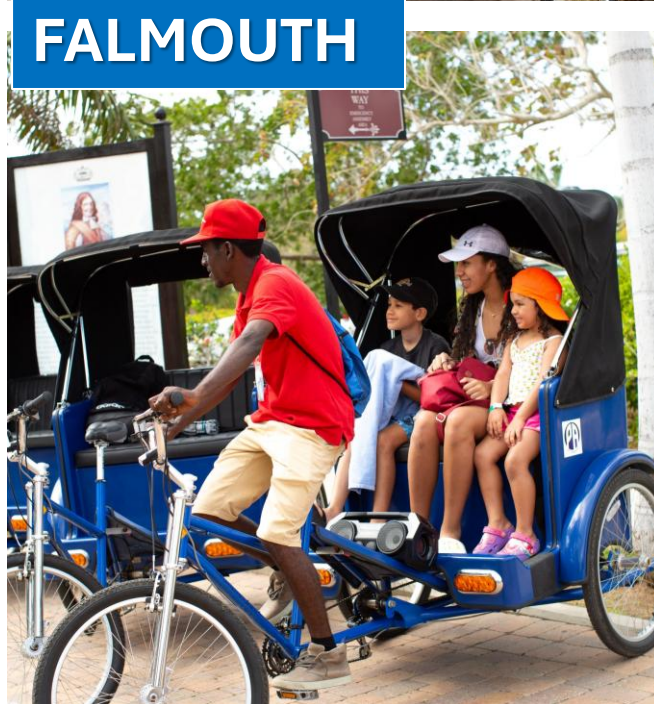
OCHO RIOS BERTH REPAIR

- 06 February 2024: 2 cold fronts converged
- Windspeeds **exceeded 50 knots/hr** in sustained gusts for over 2 hours (*normally 20-25 knots/hr*)
- Cruise ship collision with berth – critical infrastructure damaged; pier unusable. **Officially reopened November 2025.**



Berth ready November 2025





Community Sustainability: Pedicab Tour

- Employment opportunity (Falmouth residents).
- Provide organized historic, heritage tour delivered safely.
- Tour even if physically unable or unwilling to walk.
- 12 Pedicabs (Falmouth); 6 (Ocho Rios).
- Training by HEART / NTA and Tourism Enhancement Fund (TEF)
 - familiarization with existing attractions offerings, small business operations & customer care

Holding the line at Sea: Importance of Partner relationships



👍 1,594 💬 28 🔄 24 📌 131

loyal.to.royal Royal Caribbean's first ship after Hurricane Melissa docked in Jamaica, bringing over 120 pallets of relief supplies. 📦🚢

👉 After last week's Category 5 hurricane, Rhapsody of the Seas arrived in Jamaica to support affected communities by delivering much-needed relief supplies.

🇯🇲 More than 120 pallets containing water, bedding, medical items, and food will be offloaded for immediate distribution with support from relief partner GEM.



❤️ 4 💬 🔄 📌

portauthorityja A warm Jamaican welcome to Virgin Voyages' Resilient Lady, on its inaugural call at the Port of Ocho Rios! 🇯🇲🇺🇸

This milestone visit demonstrates the return to normal cruise shipping activities and restart of operations at the Port of Ocho Rios.

The Resilient Lady brings a unique cruise visitor offering, and our dedicated teams including our marine pilots, linesmen, security personnel, tour operators, and local vendors are a part of collaborative team network that ensures the delivery of world-class service.



❤️ 1,400 💬 37 🔄 66 📌 185

Liked by zlee58487 and others

kaboommag Virgin Voyages' Resilient Lady cruise paid a tribute to Jamaica as it departed the shores of Ocho Rios yesterday, lighting up the night sky with a striking "One Love" display in a green and red.

The luxury vessel made its inaugural call at the Port of Ocho Rios yesterday, having sailed from Miami to Jamaica's north coast, a symbolic journey reflecting the island's resilience in the wake of Hurricane Melissa. Despite recent challenges,



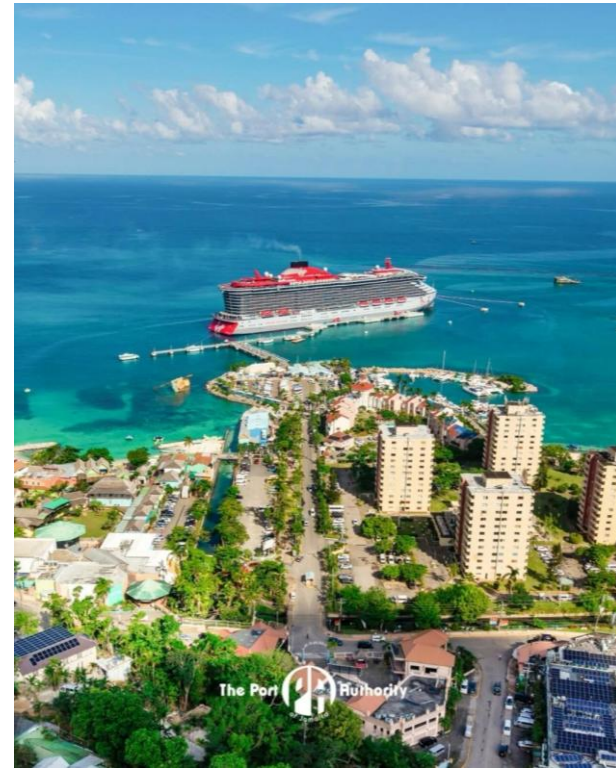
❤️ 10 💬 🔄 📌

portauthorityja The Star Clipper is a 4-Masted Schooner (sailing ship). Her inaugural call at the Port of Montego Bay today signals the sustained demand and competitiveness of our world-class facilities as well as the attractiveness of our renowned Jamaican brand.



MB → FA 21 NM
 FA → OR 32 NM
 MB → PR 171 NM
 OR → MB 54 NM

*NM- Nautical miles



MULTI PORTING BENEFITS

- **Income maintenance/ generation** during hotel and port closures.
- **Homeporting** critical to hospitality (*Mein Schiff, AIDA, Marella*).
- **Enhanced port capacity** key for cargo receipt & distribution during crises.
- **Comprehensive, multi-layer security approach**
 - Timely detection & response to threats while ensuring maritime operation continuity.



THANK YOU

“There is a transition in **Port Resilience emphasis from infrastructure to a more holistic strategy that includes organizational, technical, and environmental aspects.**

Redundancy of transportation routes, capacity sharing, and use of other ports enhance the capability to redirect cargo and sustain operations during crises.

Emphasizing infrastructure development enhances operating efficiency and mitigates vulnerabilities, facilitating a swifter recovery from interruptions.”

Tsoufas, G.T. Port resilience: a systematic literature review. Marit Econ Logist (July 2025). <https://doi.org/10.1057/s41278-025-00326-3>

