



Tropical
SHIPPING

COMMITTED TO
*ISLAND*LIFE



“ Port Resilience Disaster : New Technologies for Disaster Risk Management ”

*A Presentation In Partnership with
OEA OAS-CIP , 14th Regular Meeting
June 8, 2026 , Bridgetown , Barbados*

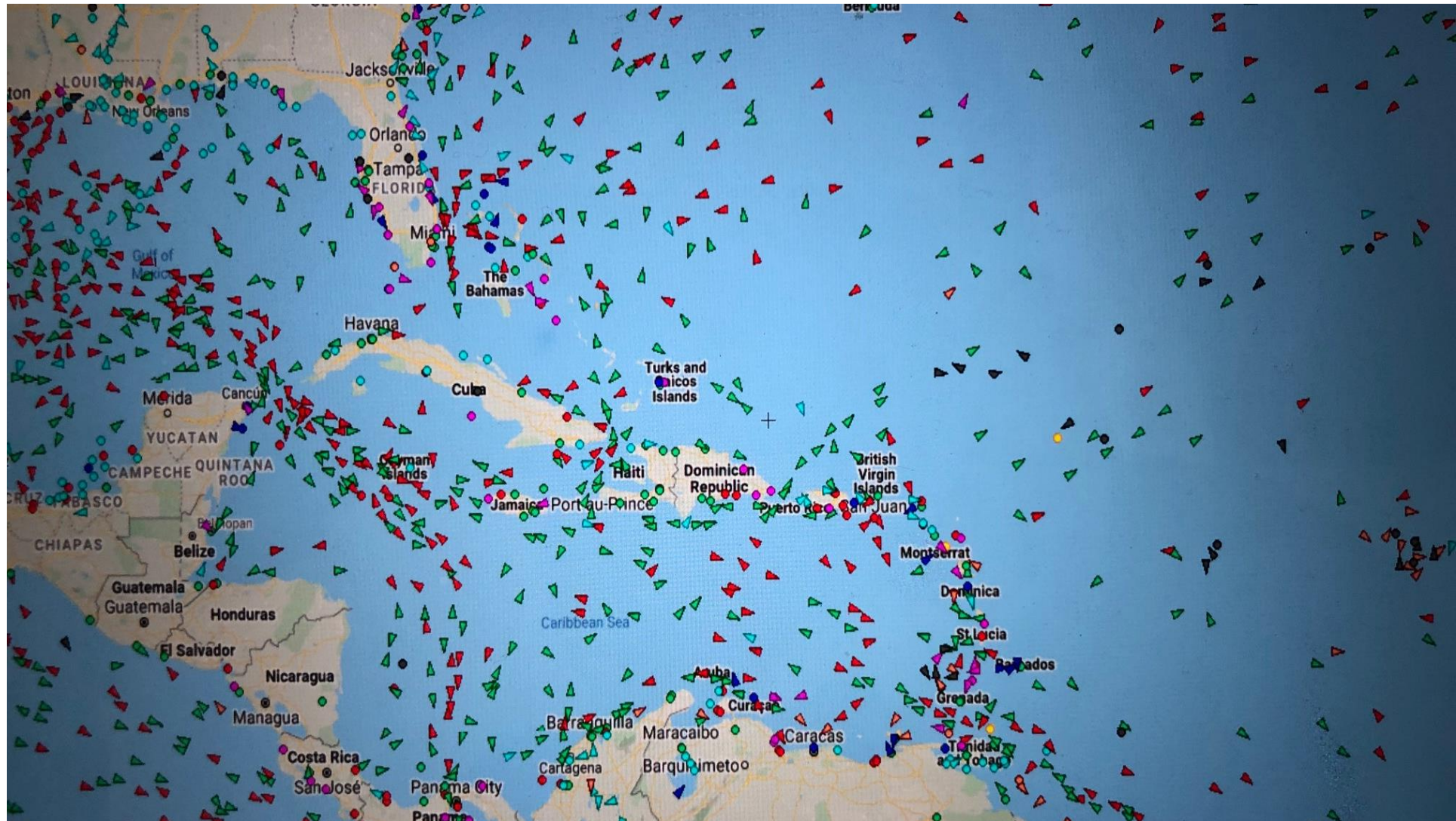
Jennifer Nugent-Hill

Senior Director, Governmental & Community Affairs

Tropical Shipping

“Building Port Resilience must start with the Continuity of Operations and consideration of its critical impact on PEOPLE first ... It’s a Strategic Imperative !





A normal day of Ships at Sea in the Caribbean !

- www.marinetraffic.com

31 Ports Within the Caribbean, Bahamas and South America

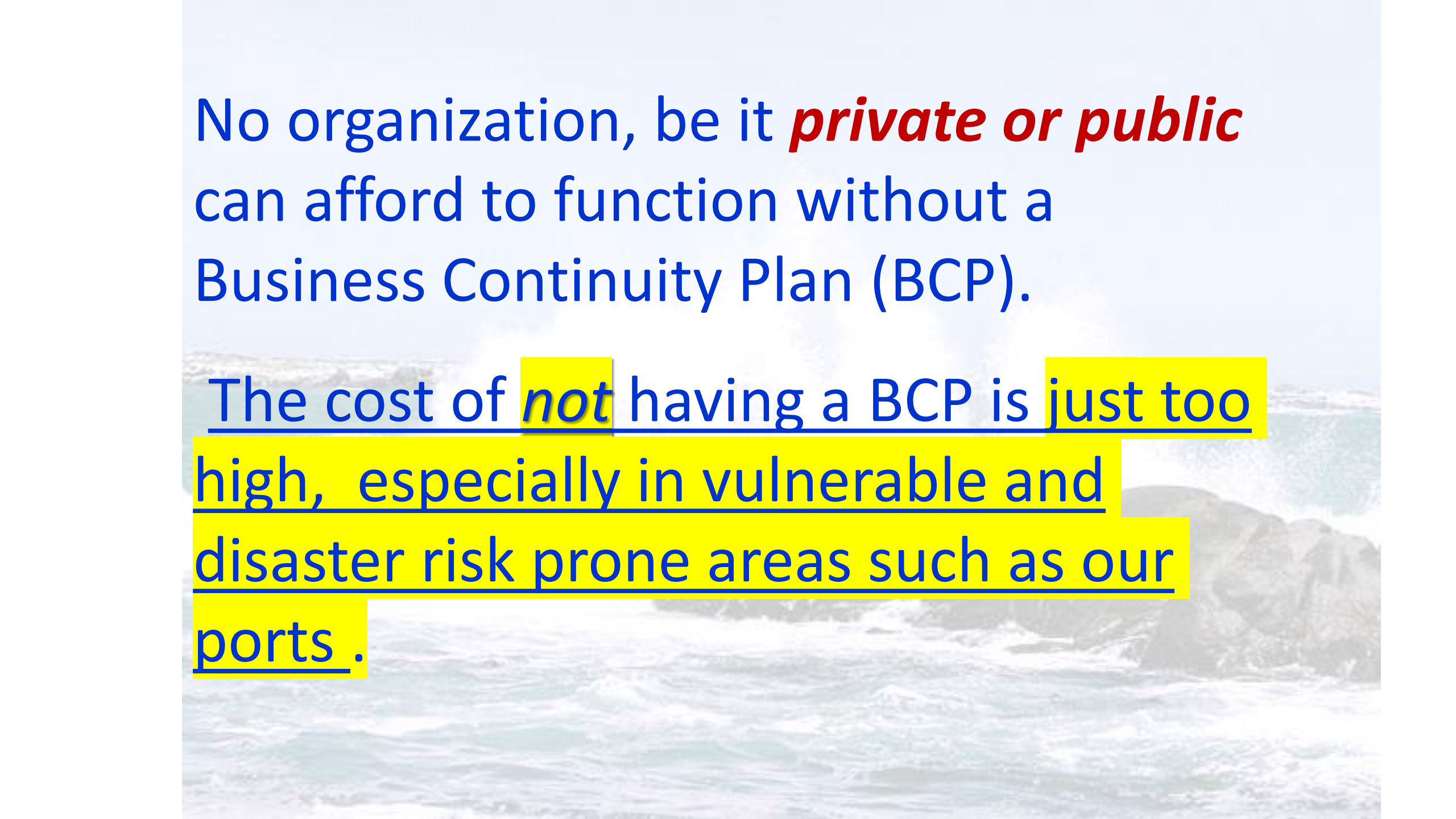


Key Principles in the Cycle of Disaster Management

- A rapid and well coordinated response to a crisis/disaster is critical
- The Four (4) phases of Disaster Management- ***Preparation, Response, Recovery & Mitigation***

.... *And there is a fifth one- Partnership- The Private Sector*

- ***Our Ports*** – a lifeline to ***Rapid and Timely Response*** and ***extremely Critical for Recovery*** of every community and its economy
- Ports are critical for Economic Resilience thus ***Priority funding and Access to resources and Technolgies*** and Yes, ***Depoliticized the professionals who run Ports with Excellence !***
- ***Who is in charge?*** Strong Leadership requirement
- For ***Operational Excellence*** – ***See the OAS-CIP Port Disaster Plan document***



No organization, be it ***private or public*** can afford to function without a Business Continuity Plan (BCP).

The cost of ***not*** having a BCP is **just too high, especially in vulnerable and disaster risk prone areas such as our ports .**

A BCP is to Guide Strategic Actions

- Ensures the **safety of personnel** during a disaster
- **Protects assets**. Minimizes damage and loss
- **Identifies** your risks and **vulnerabilities**
- **Exercise the plan with staff-** adjust it if needed
- **Provides** organizational and operational stability
- **Facilitates decision-making** during a crisis
- Helps with an **orderly recovery** from a disaster
- **Assures your stakeholders** of return to normalcy

Essential for a BCP

- ***Executive Sponsorship- a must.*** If the Ports' leadership is not interested or engaged, then no one else will be either
- Conduct a ***Risk Analysis (RA)***. Know the risks, know the threats, **know the vulnerabilities** of the environment where you operate – **Use Technology-AI**
- **Contingencies:** Does your plan cover all bases including insurance coverage and relocation options, personnel shortage?
- **Determine the *absolute minimum personnel requirements***- and **have a back-up plan to the plan**

Ports - Strategic Partnership and Cooperation





The Power of Partnerships In Disaster Resilience !

- **Best Practices** for Private Sector integration with Ports & Emergency Management Agencies
- **Technology**- Drones and Rovers Academia & Ocean Observers
- **Integration of a foundational understanding of Artificial Intelligence(AI)** with Human Intelligence (HI) **within the context of disaster management** enterprise systems and Port Community Systems is **critical and essential**
- Regional Shipping lines , the Supply Chain and **Caribbean Disaster Emergency Management Agency (CDEMA)-MOUs**
- And just few word on “Working Effectively” with Elected Officials during Preparedness, Response and Recovery phases of a disaster - It truly requires effective communication and INTENTIONAL strategic collaboration !

A GROWING THREAT TO THE CARIBBEAN...

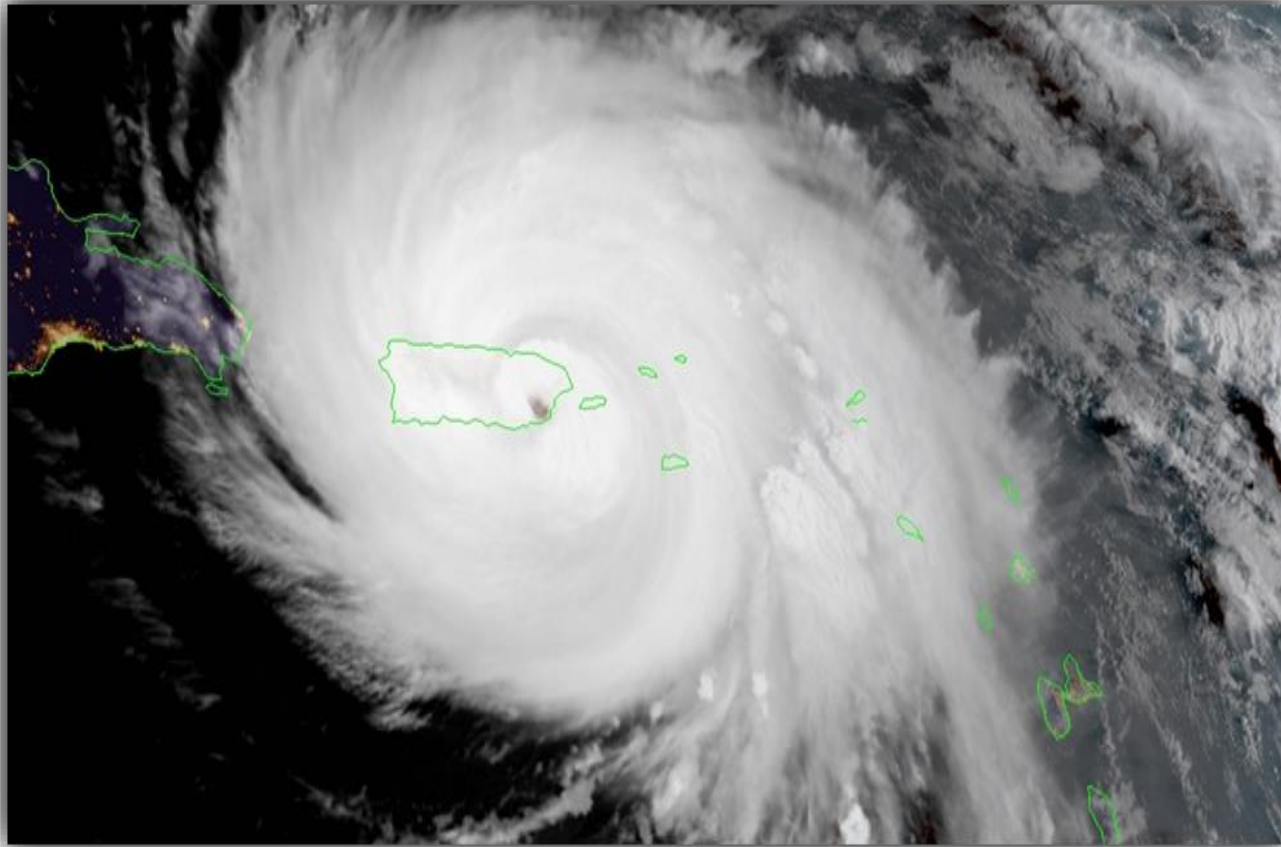
- PRIVATE SECTOR
- GOVERNMENT
- PORTS

CYBER ATTACKS on the Maritime industry has increased !!

In Summary a BCP is Smart Planning

- It Prepares the organization and its team to respond effectively
- It Minimizes the effect of the disaster
- It Enhances disaster Response & Recovery
- It helps to Control the Outcome of the impact from the disaster

Caribbean Ports ... We have weathered many storms! Keep being Strategic.





Tropical
SHIPPING

COMMITTED TO
*ISLAND*LIFE

