



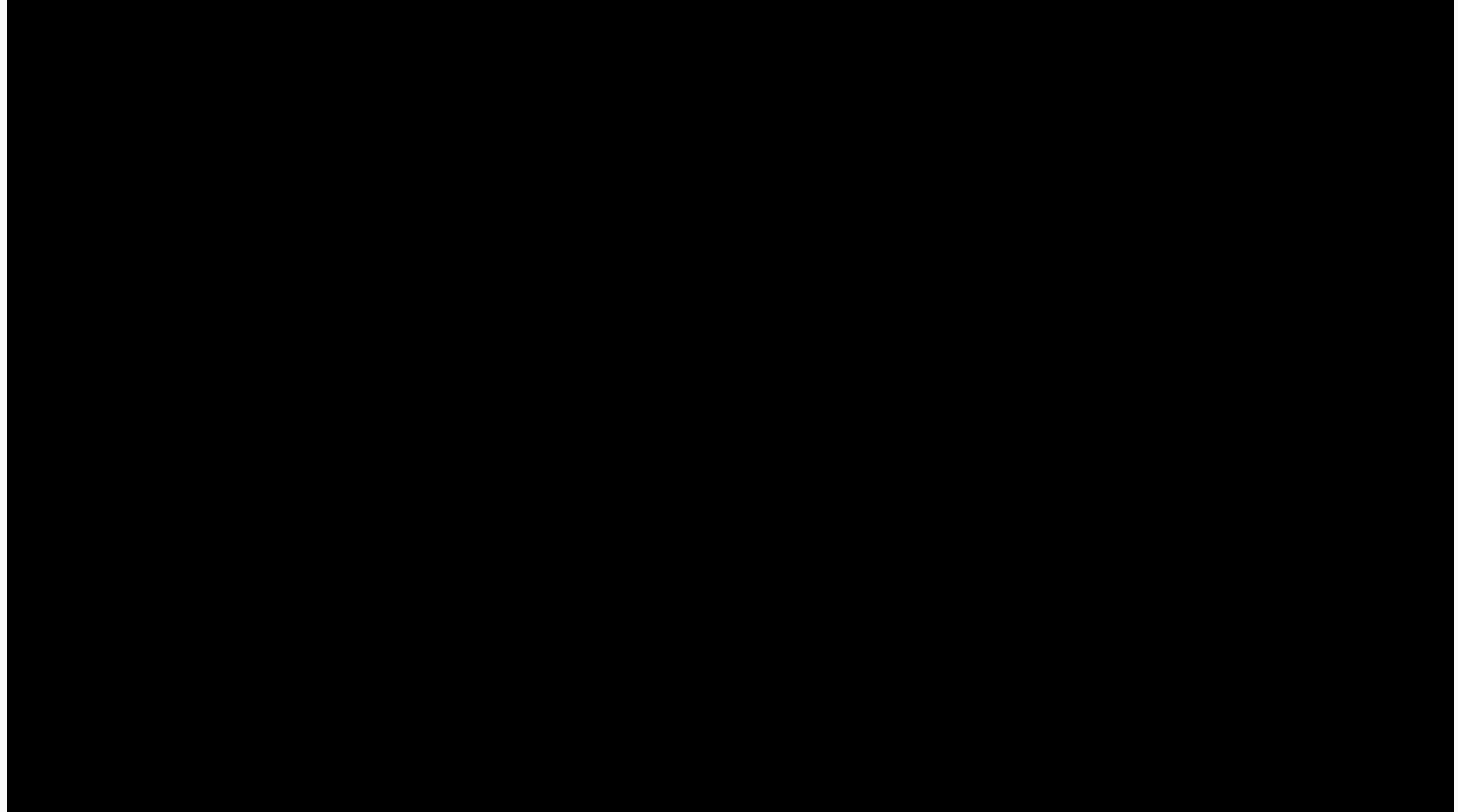
PORTMIAMI

**II Hemispheric Conference on Ports Competitiveness Logistics:
Connectivity for Development
Veracruz, Mexico
October 2016**

Gerard Philippeaux
Manager, Seaport Strategic Initiatives



Video of PortMiami



BIG SHIPS WELCOME



PORTMIAMI FACTS AT A GLANCE

- PortMiami is a Global Gateway
- Cruise Capital of the World
- Ranked #13 among US ports
- PortMiami is located in Miami-Dade County, one of the most diverse, multi-lingual populations in the U.S. with 2.6 million residents from more than 120 countries speaking over 80 languages
- Economic Impact:
 - \$27 billion and Second largest economic engine in Miami-Dade County
 - 207,000 Direct/Indirect Jobs throughout South Florida



PORTMIAMI PERFORMANCE AND PRODUCTIVITY

PortMiami ranked first for Port Productivity and Performance on the East Coast in the 2014 edition of Top Ports in the United States published by the Journal of Commerce (JOC).

PortMiami has been honored with the 2015 Editor-in-Chief Award for Best U.S. Homeport in the February 2015 issue of *Porthole Cruise Magazine*.

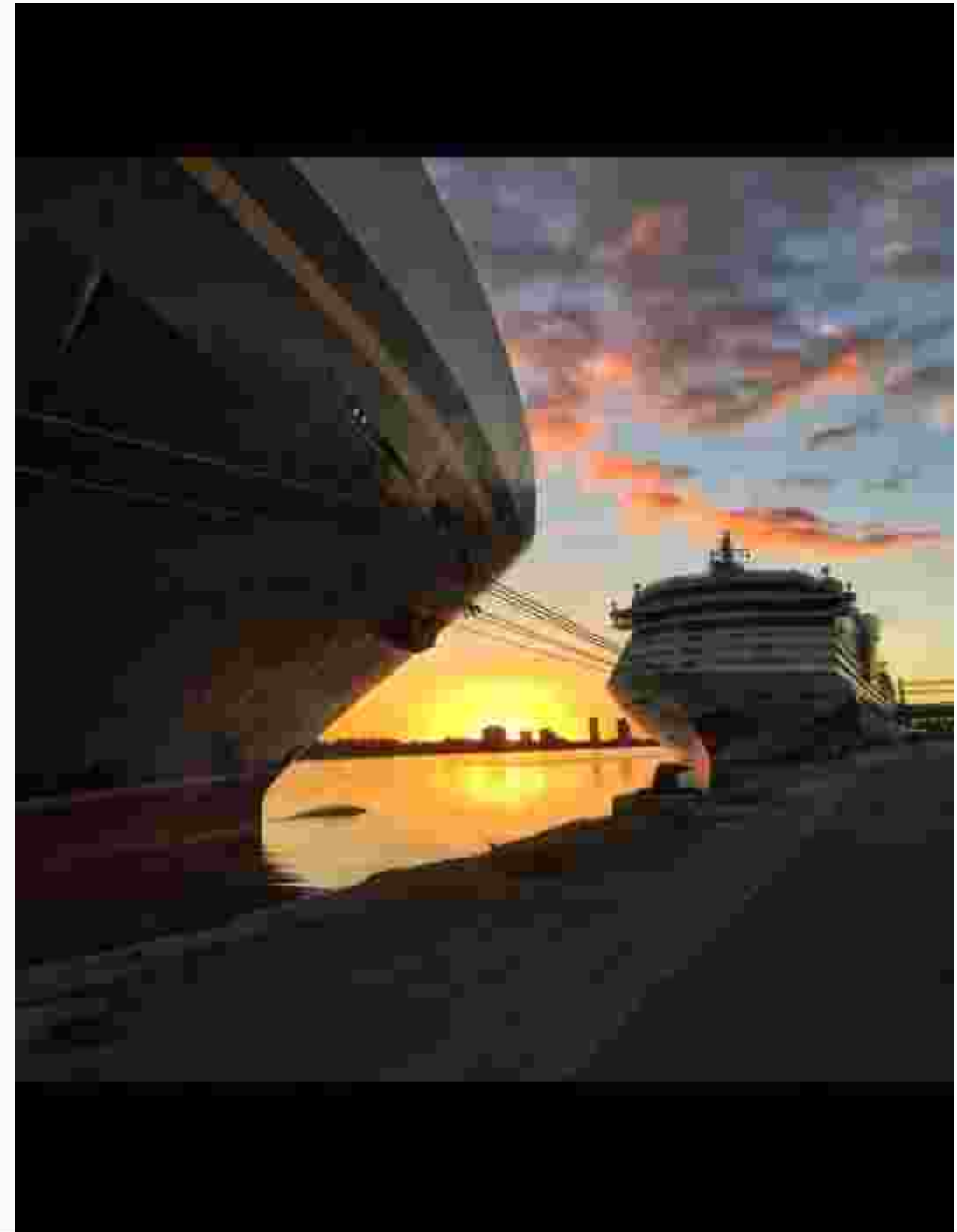


2015 FINAL RESULTS – CRUISE BUSINESS



- **4.9 MILLION CRUISE PASSENGERS**

A World Record



2015-16 CRUISE HIGHLIGHTS

CRUISING FROM MIAMI IS ONLY GETTING BETTER – OFFERING TRAVELERS VACATIONS FOR

- 19 Cruise Brands
- 42 Ships

November arrival of Norwegian Cruise Line's new ship, the *Norwegian Escape*

Carnival Corp. announces Miami as the homeport for newest ship *Carnival Vista* (Fall 2016); and homeport for *Fathom* (May 2016)

MSC Seaside coming up 2017

2020 Virgin Miami homeport



THE FUTURE LOOKS BRIGHT

New Cruise Terminal “A” “Crown of Miami”

Royal Caribbean will design, build and operate a new cruise terminal in Miami, Florida that can handle the largest cruise ships in the world.

The new terminal, Terminal A, will open in Late 2018.

Terminal A would house an angular glass center and a parking garage with about 1,000 parking spaces at the northeastern side of the port.

The 170,000-square-foot terminal is nicknamed the ‘Crown of Miami’ because of its shape. The design evokes the points of a crown when viewed from the water; the ‘M’ of Miami when viewed from the east or west.

At night, the terminal’s facade will be lit providing a dynamic addition to the PortMiami landscape



CARGO BUSINESS GROWTH

- **1,007,800 TEUs in 2015 – Record Year!**
- **PortMiami posted an increase of 15% in containerized cargo movements in FY2015**
- **Plus 8% growth during the 1st Quarter of 2016**



NEW TREND FORWARD

Carriers have started to up-size their Panama services with neo-Panamax ships and PortMiami is ready.



BIG SHIPS WELCOME

BIG SHIPS = BIG CHANGE

- **Faster, smarter routing**
- **Save time getting products to consumers**
- **Opening new gateways**
- **Reducing labor and fuel costs**



MEGA CONSTRUCTION PROJECTS IN MIAMI

Miami World Center



American Dream Miami



American Dream Miami	\$4 billion	Florida Turnpike Extension at I-75 (6.2million SF on 200 acres)
Miami World Center	\$1.7 billion	NE 7-10 St & NE 1-2 Avenue
Brickell City Center	\$1.05 billion	Brickell Avenue and Miami River
Sole Mia	\$4 billion	Biscayne Blvd & NE 150 St
Genting	\$3.1 billion	NEQ of Biscayne Blvd and I-395
Dania Live/ Kimco	TBD	I-95 between Stirling Road and Griffin Road

Sole Mia



Brickell City Center



Dania Live/ Kimco



BIG SHIPS WELCOME

INFRASTRUCTURE IMPROVEMENTS

- **-50/-52 ft. depth deep dredge completed – accommodates fully laden vessels up to 14,000 TEU's**
- **Port Tunnel – with direct access to interstate highway system**
- **On-dock rail facility**
- **Super Post-Panamax cranes**



BIG SHIPS WELCOME

DEEP DREDGE -50 ft. (15.3m)

- **ONLY port south of Virginia able to accommodate the new, larger Post-Panamax vessels**
- **6,100 feet of continuous berth along deepened channel**
- **30 minutes from open ocean to berth**
- **No fog, no snow, no congestion**



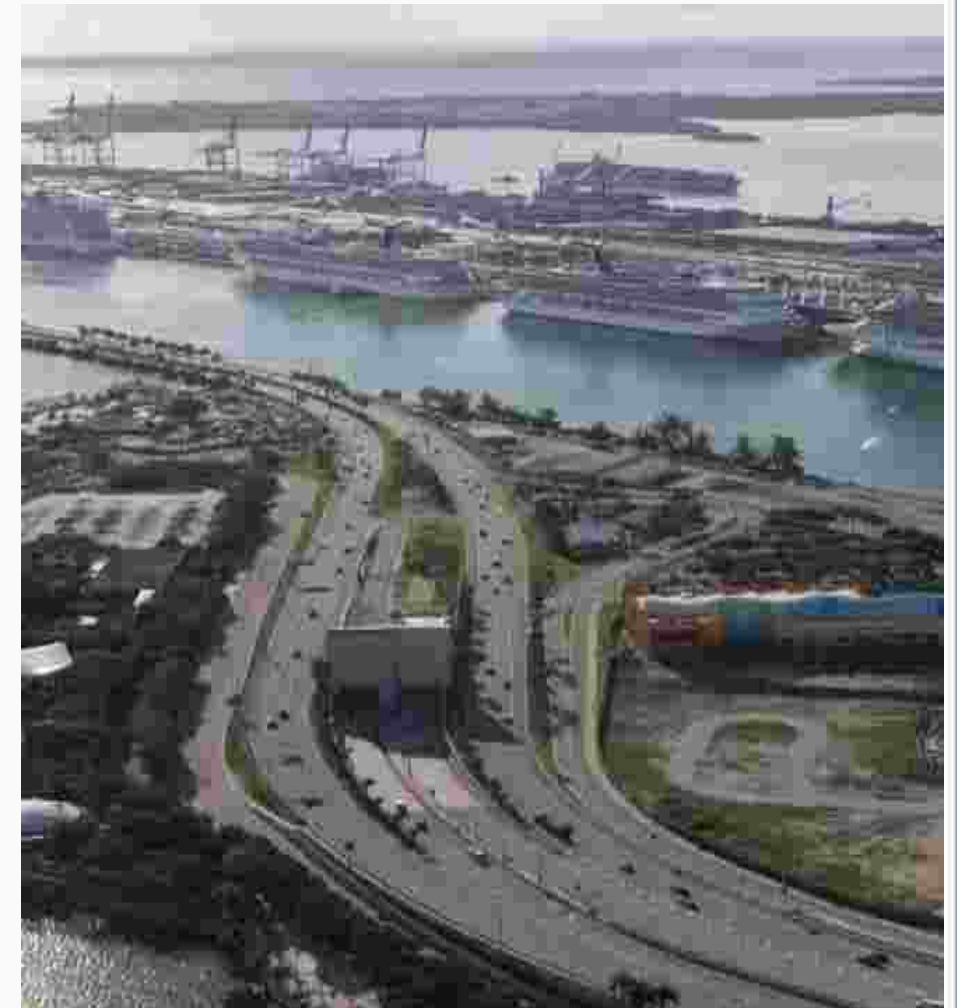
PORTMIAMI TUNNEL

Public-Private Partnership (P3)

- 35-year Design-Build-Finance-Operate-Maintain Agreement between FDOT and Miami Access Tunnel (MAT)
- Public Funding Partners: Miami-Dade County and the City of Miami (\$457.5M)
- MAT hired Bouygues Civil Works Florida to design and build projects

Project Costs: \$903 Million

- Construction: \$652M
- Reserves: \$40M
- MAT Costs, operation & maintenance: \$60M
- Financing and other capital costs: \$151M



BIG SHIPS WELCOME

PORTMIAMI TUNNEL

Harriet

Tunnel Boring Machine

- Manufactured by Herrenknecht in Germany
- Cost is over \$45 million
- Arrived in Miami, June 2011
- 480 ft. long (more than 1 ½ football fields)



INTERMODAL ON-DOCK RAIL

- **FECR** is the exclusive direct on-dock rail service provider at *PortMiami*
- Featuring 9,000 ft. of track (3 x 3000 ft.)
- Seamless, double-stack daily train service to and from the Port for inland imports and exports
- Maximize offload with fast service into major markets:
 - ✓ Reach Southeast U.S. within 2 days
 - ✓ Reach Midwest and Northeast U.S. in 3 - 4 days



BIG SHIPS WELCOME

PORTMIAMI'S INFRASTRUCTURE



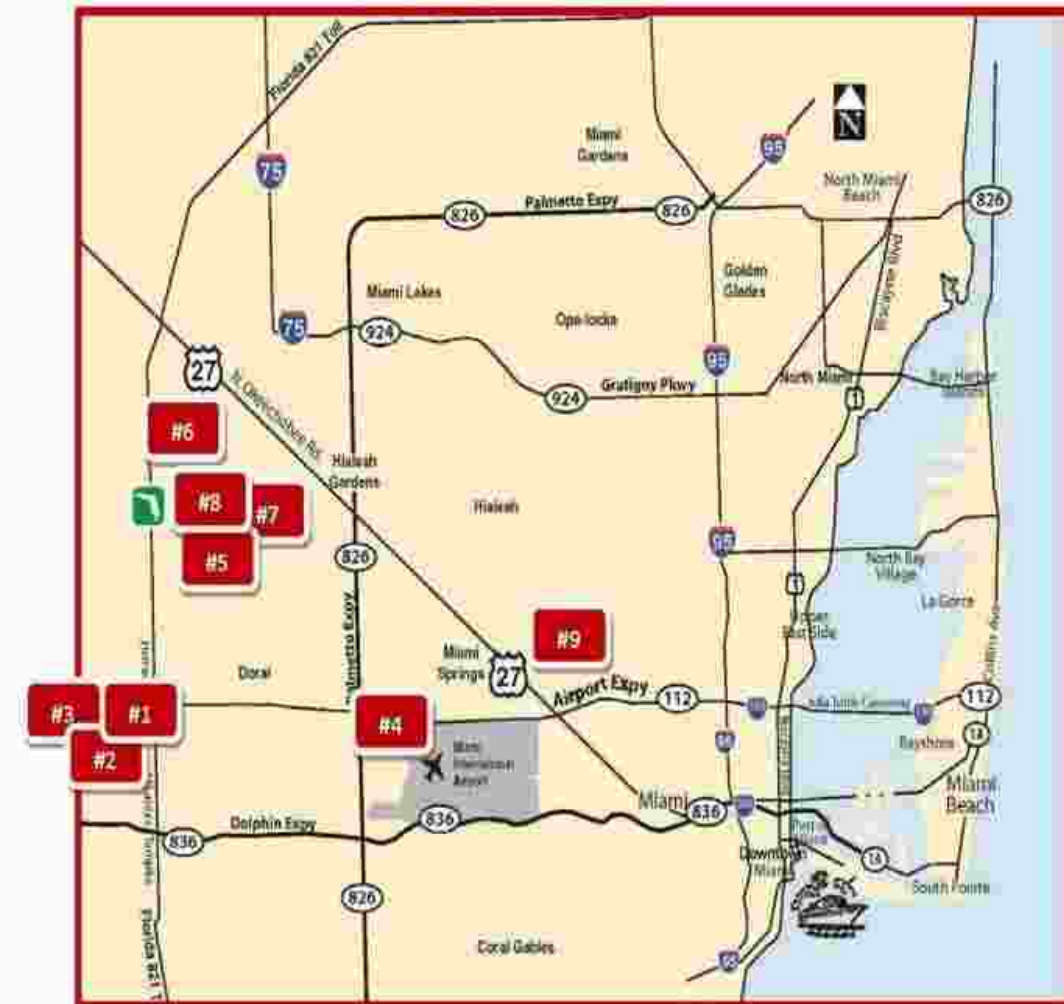
COMMERCIAL WAREHOUSING ADVANTAGES

**TOTAL WAREHOUSE SPACE:
238,000,000 SQ. FT.**

- 15 New Class A bulk warehouses being constructed due to increased demand
- 9 million sq. ft. of new warehouse space since 2012
- 46 active FTZ warehouses and over 5 million sq. ft. – growing rapidly
- Current vacancy rate is 4.7%



**FOREIGN TRADE ZONE
281 PORT MIAMI**



BIG SHIPS WELCOME



TRANSSHIPMENT HUB OF THE AMERICAS

Transship & Increase Trade

PortMiami is strategically situated as a trade nexus for Asia, Europe, and the Americas making it the most accessible Transshipment Hub in the Western Hemisphere.



PortMiami Advantages

- Frequent services to Latin America & Caribbean (more than 30 sailing weekly)
- CBP expediting transshipments
- Customer Service Team-CBP
- Less Calls = More **SAVINGS**



BIG SHIPS WELCOME



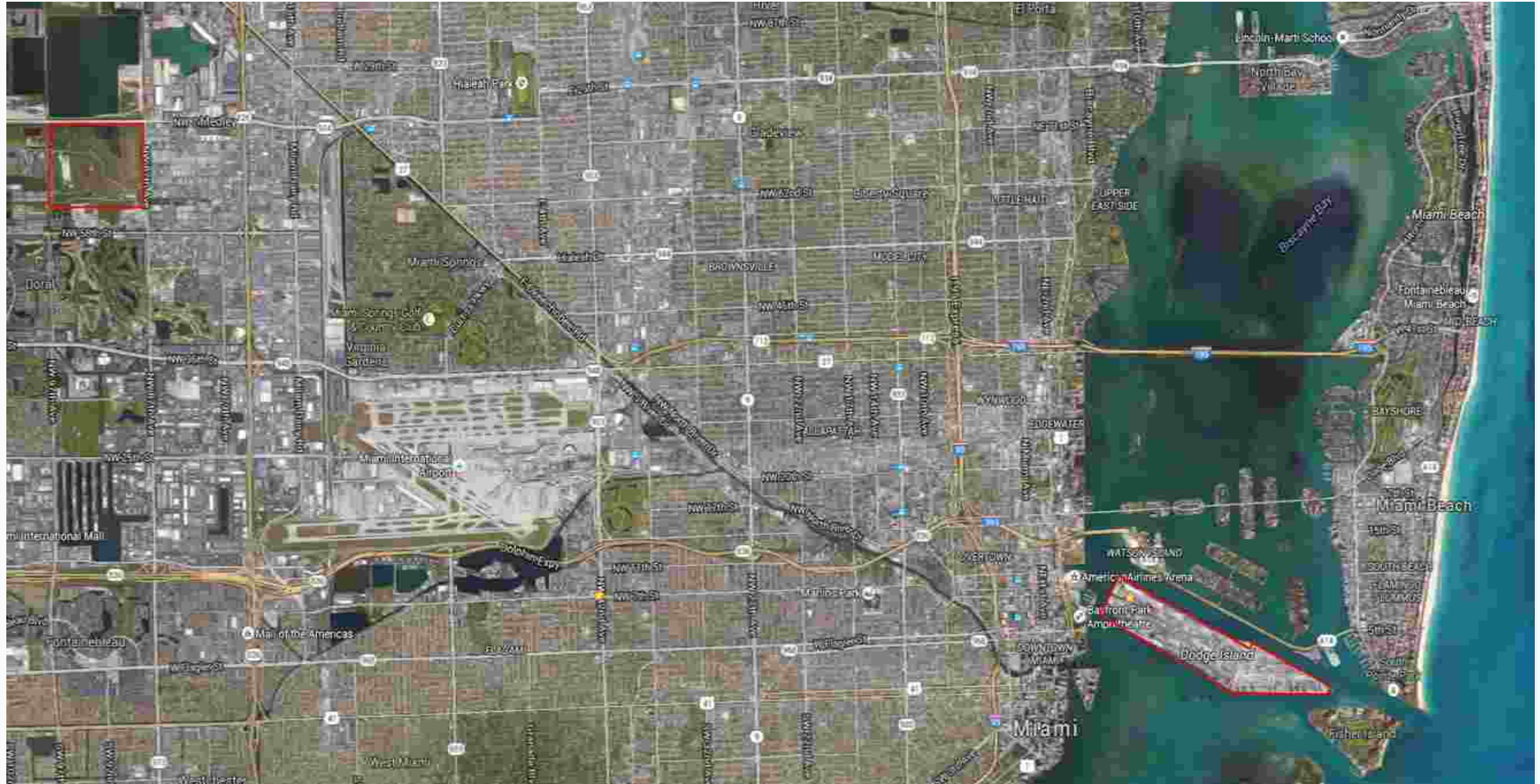
FUTURE PROJECTS

- New Rubber Tired Gantry Systems
- Gate Improvement System
- New Post-Panamax Cranes
- Inland Port



BIG SHIPS WELCOME

INLAND PORT PROJECT



RE-ROUTE VIA MIAMI AND SAVE



“Less Road More Water”

BIG SHIPS WELCOME



Gracias!

