

# PORTMIAMI SAFETY AND SECURITY



## PORT OVERVIEW



PORTMIAMI



- PortMiami, formally the Dante B. Fascell Port Of Miami, is a major seaport located in Biscayne Bay in Miami, Florida. It is the largest passenger port in the world and one of the largest cargo ports in the United States.





PORTMIAMI

# FACTS AT A GLANCE



- PortMiami is a Global Gateway
- Miami has one of the most diverse, multilingual populations in the U.S. with 2.7 million residents from more than 120 countries speaking over 80 languages.
- PortMiami Economic Impact: \$44.4 billion to local and state economies and 324,352 Direct/Indirect Jobs to South Florida.





# 2018 FINAL RESULTS – CRUISE AND CARGO BUSINESS



## CRUISE

- PortMiami the Cruise Capital of the World
- 5.5 M Passengers FY2018
- Eight cruise terminals and one ferry/small cruise terminal

## CARGO

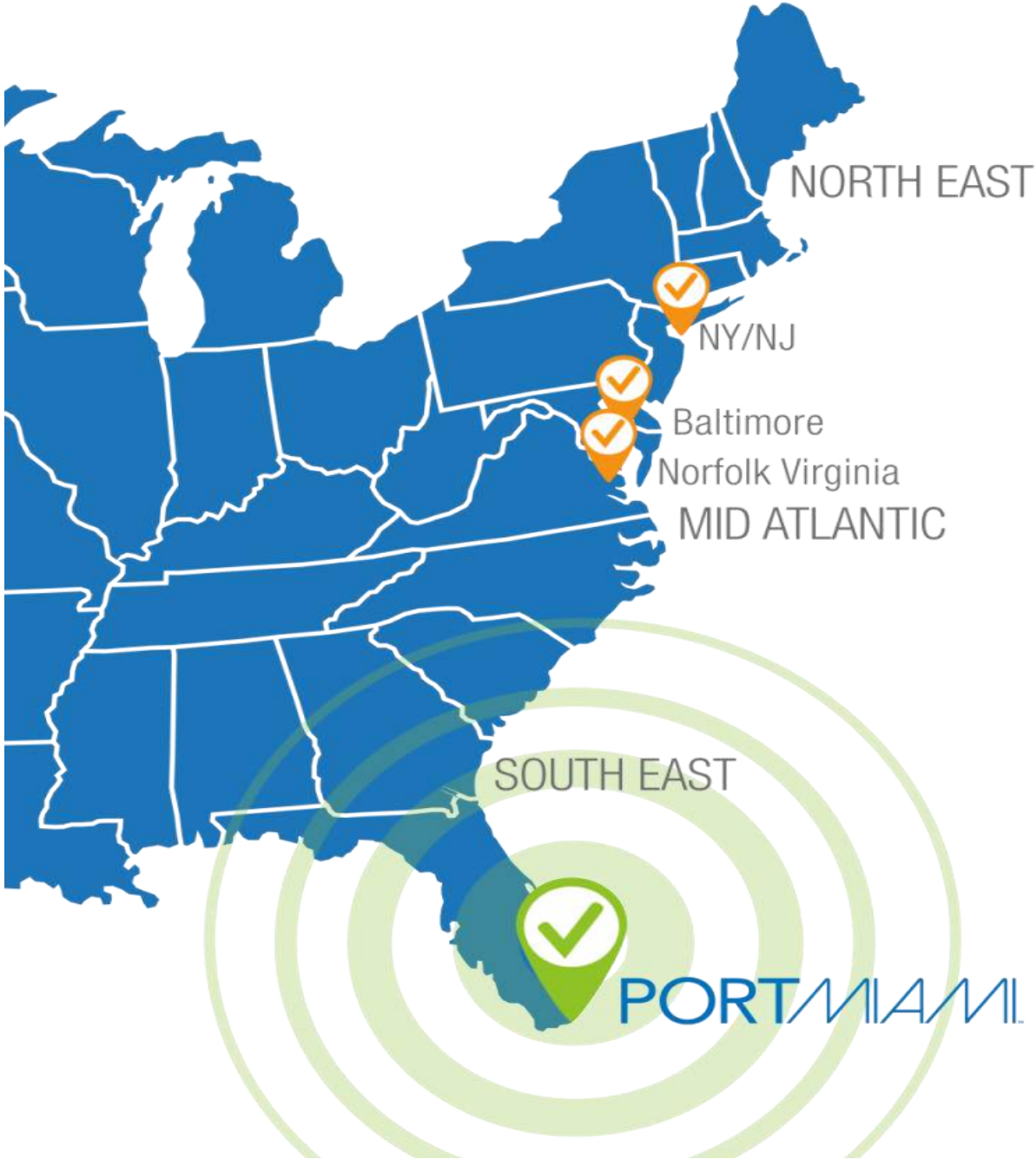
- Ranked among the fastest growing container ports in the U.S.
- 1.084 Million TEUs FY 2018
- The port's old cargo record of 1.054 Million TEUs was set back in 2005
- Over 200 Neo-Panamax vessels since 2017



# INTERMODAL ON-DOCK RAIL



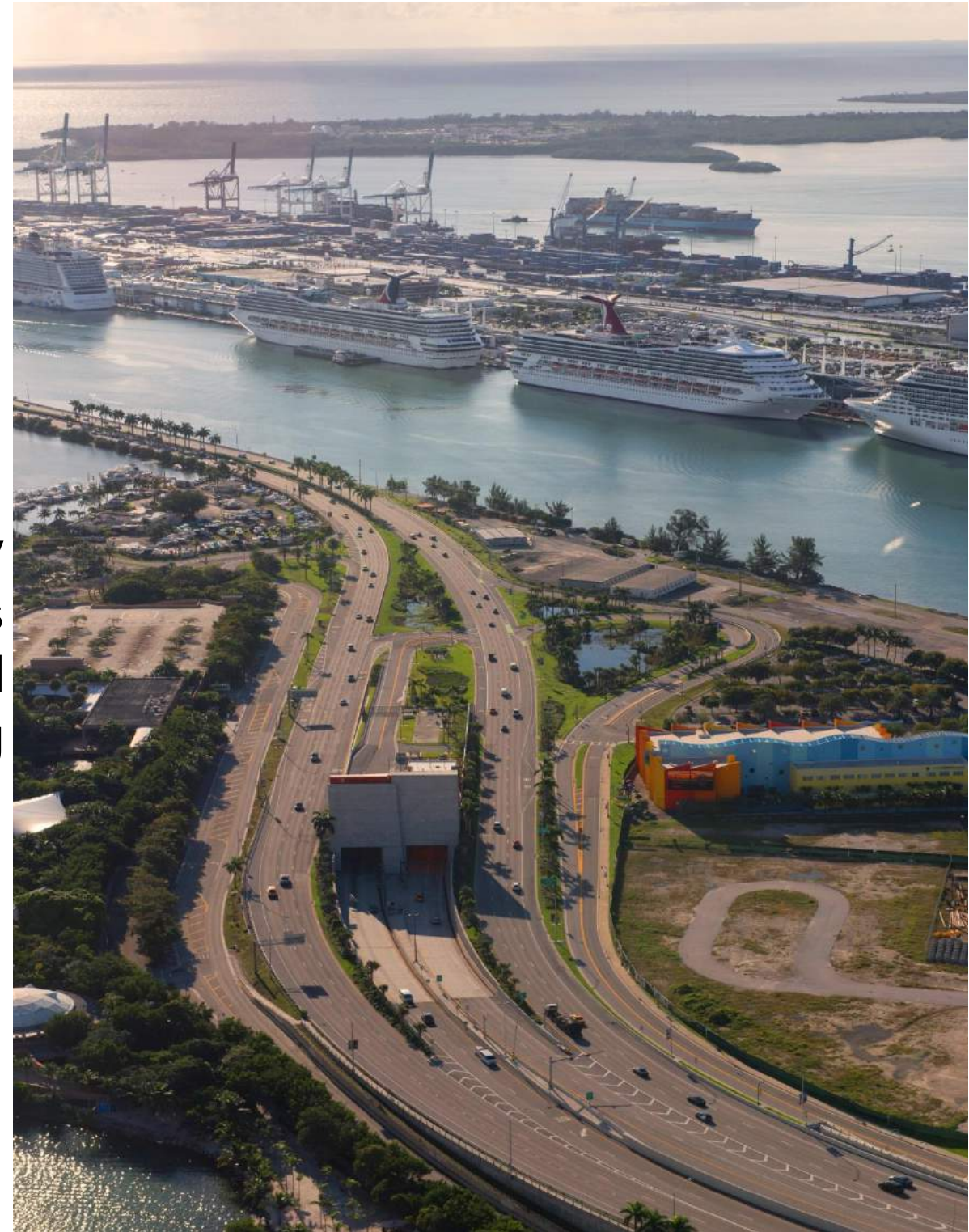
- PortMiami has invested \$50 million in the modernization of its on-dock freight rail system, creating a connection to the national rail system and expediting the movement of goods throughout Florida and the continental U.S.
- PortMiami-FEC partnership – cargo can reach 70% of the US population in 1-4 Days
- Cargo can reach SE population (23% of US consumers) in 2 days
- Florida is the 3rd most populous state – 19 million residents and more than 90 million visitors
- Expansive New Foreign Trade Zone 281 in most of Miami-Dade County



# PORTMIAMI TUNNEL



- PortMiami Tunnel Project Nationally Recognized
- The Tunnel has proven to be a success
- Vehicular traffic now flows smoothly through downtown Miami, pedestrians are safer, and container trucks and cruise passenger traffic are reaching their final destinations faster



# CONTINUED INVESTMENTS FOR GROWTH



- One new cruise terminal and related facilities to be completed by 2020
- Up to four new cruise terminals and related facilities to be completed between 2021- 2024 (projected)

These projects will be funded either by the port or in collaboration with private sector partners



# CURRENT: CAPITAL INFRASTRUCTURE IMPROVEMENTS



- New Cruise Terminals A, B, AA and AAA
- Purchase of New Cranes
- Cargo Infrastructure Improvements
- Liquefied Natural Gas LNG Solutions (future development)
- Southwest Corner Expansion/ Dredge Project





# CRUISE – ROYAL CARIBBEAN- TERMINAL A



The 170,000-square-foot terminal is a \$247 million dollar public private partnership nicknamed the ‘Crown of Miami’ because of its shape. The design evokes the points of a crown when viewed from the water; the ‘M’ of Miami when viewed from the east or west.





# CRUISE TERMINAL B



Terminal B will accommodate NCL's newest 5,400 passenger vessels homeporting at PortMiami. The 166,000 square foot terminal will have a smooth finish like a pearl's surface.



# PortMiami Safety and Security

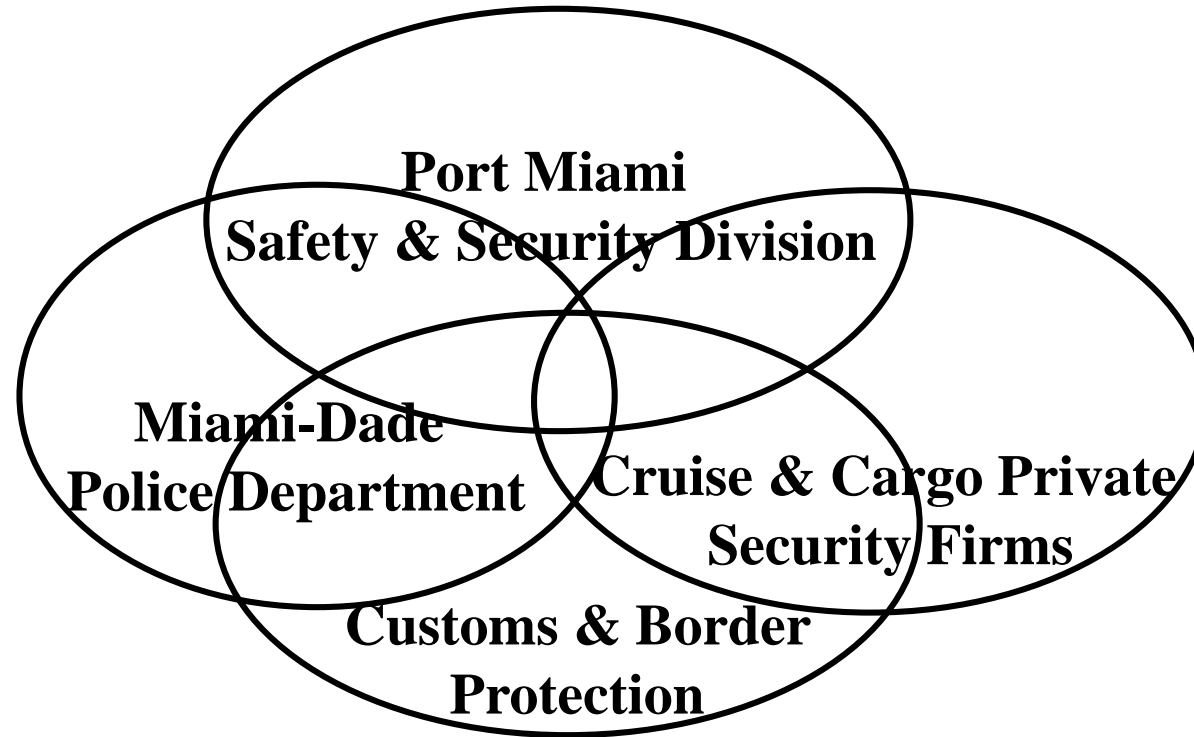


- PortMiami Safety and Security Division works side by side with Miami Dade Police Department including federal, state and local Law Enforcement agencies by monitoring all areas of the port.
- Cruise passengers and cargo containers can reach their destination safely





# PortMiami Layered Approach of Security



- Port Miami Safety & Security Division
- Miami-Dade Police Department
- Cruise & Cargo Private Security Firms
- Customs & Border Protection



# PortMiami Safety and Security Drills & Exercises



## DRILLS & EXERCISE IMPLEMENTATION

- PortMiami Safety and Security (PMSS) holds quarterly meetings with cruise and cargo industry representatives including all Law Enforcement partners to discuss industry trends, concerns and possible future drills and exercises.
- PMSS coordinates monthly Multi Agency Strike Force Operation (MASFO) and an annual joint exercise in conjunction with the tenants, cruise, cargo yards and the Miami-Dade Police Department Seaport Operation Bureau.
- PMSS coordinates and uses related events in conjunction with other governmental agencies and industry leaders to implement drills to test our different security systems, response to alarms, access control effectiveness and notification of law enforcement authorities.



# FIRST RESPONDER PARTNERS





# PortMiami Challenges

## *Soft target for terrorist attack*

- Suspicious package with Improvised Explosive Device IED
- Vehicle Borne Improvised Explosive Device (VBIED)
- Lone Wolf active shooter
- Cybersecurity attack
- Unmanned aerial systems (UAS) also known as “DRONES”



# Challenges Mitigation Strategies

- Deterrent strategy is key
- Closed Circuit Television (CCTV) monitored by Port security
- Miami Dade Police and Port security are visible and quick to respond







# Challenges Mitigation Strategies

- MDPD EOD K-9 response
- Implementation of concrete bollards in front of all terminals
- Provide active shooter training and joint exercises with MDPD





# Challenges Mitigation Strategies

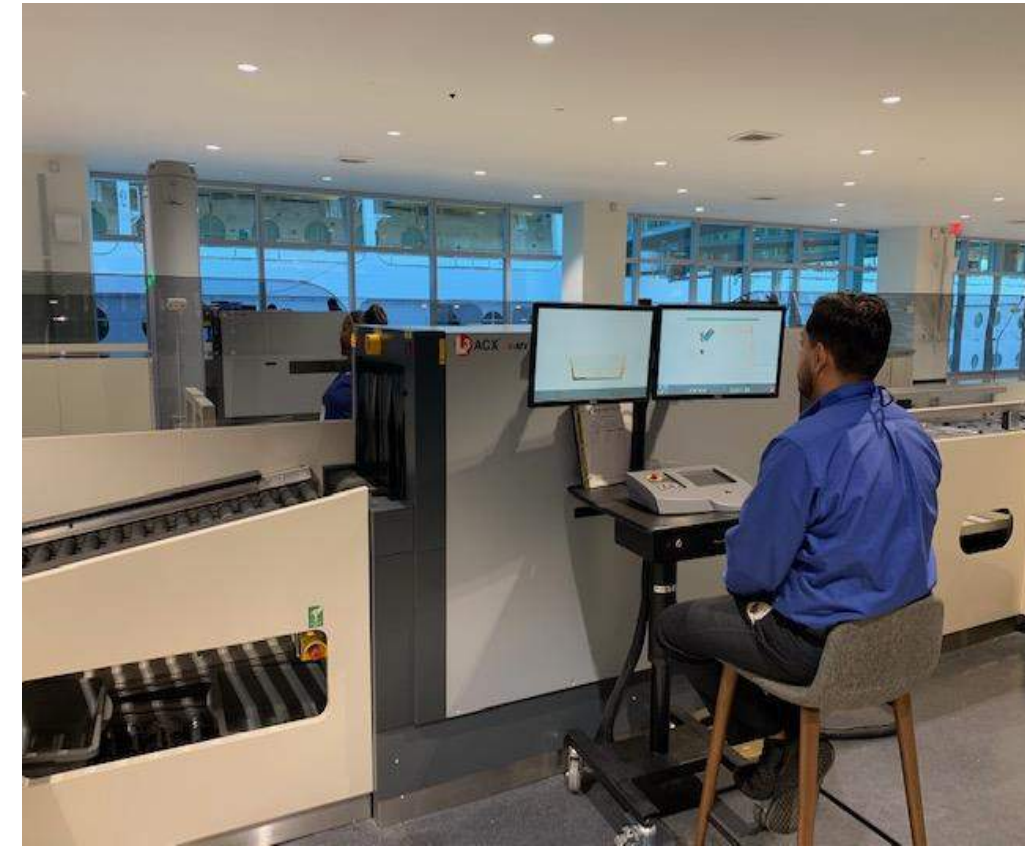


- Information Technology Department (ITD) works day and night to ensure the system is protected and enforces the password changed every 90 days





# Terminal Security Checkpoints Magnetometers and X-Ray Machines



# MIAMI-DADE POLICE DEPARTMENT SEAPORT OPERATIONS BUREAU



**HARBOR PATROL Unit**

**General Investigations Unit  
(GIU)**

**Auto Theft Task Force**



**CANINE Unit**

**Incident Containment Team  
(ICT)**





**Miami-Dade Police Department**  
**SEAPORT OPERATIONS BUREAU**

**Goal:** Provide a safe and secured environment for travelers, employees, and merchants at Port Miami, while enforcing state and local laws.

**Objective 1:** Provide a law enforcement presence to ensure passengers have a sense of security while cruising on ships docked at PortMiami.

**Objective 2:** Continue providing a law enforcement presence at the Port's cargo yards in order to prevent or deter drug and/or human smuggling.

**Objective 3:** Continue to formulate innovative solutions in order to further the police role at PortMiami.

**Objective 4:** Continue to foster relationships with state, federal, and local partners; as well as industry partners to increase training and interaction that will better prepare resources for a response to critical incidents at PortMiami.

**Objective 5:** Continue to combat the exportation of stolen vehicles from PortMiami and the PortMiami River, through the deployment of the Auto Theft Task Force (ATTF) personnel.

**Objective 6:** Continue to provide waterside law enforcement presence through the deployment of the Harbor Patrol Unit.



The PortMiami Police & Security Division and Fire Rescue to include Marine Services is located on the island for immediate responses and accessibility.

Police / Safety & Security Division

Fire Rescue Station-ALS Engine & Rescue





# PortMiami Surveillance & License Plate Readers

Port Bridge LPR'S (All Inbound/Outbound Lanes)



Sky Tower



Mobile LPR Vehicle (Routine Patrol Daily)



Real-time ALERTS on wanted vehicles and persons (NCIC/FCIC) Nationwide monitoring.



Mobile Speed Trailers with surveillance cameras and LPR'S (Port Tunnel)



# Detection and Mitigation of Unmanned Aircraft Systems (UAS)

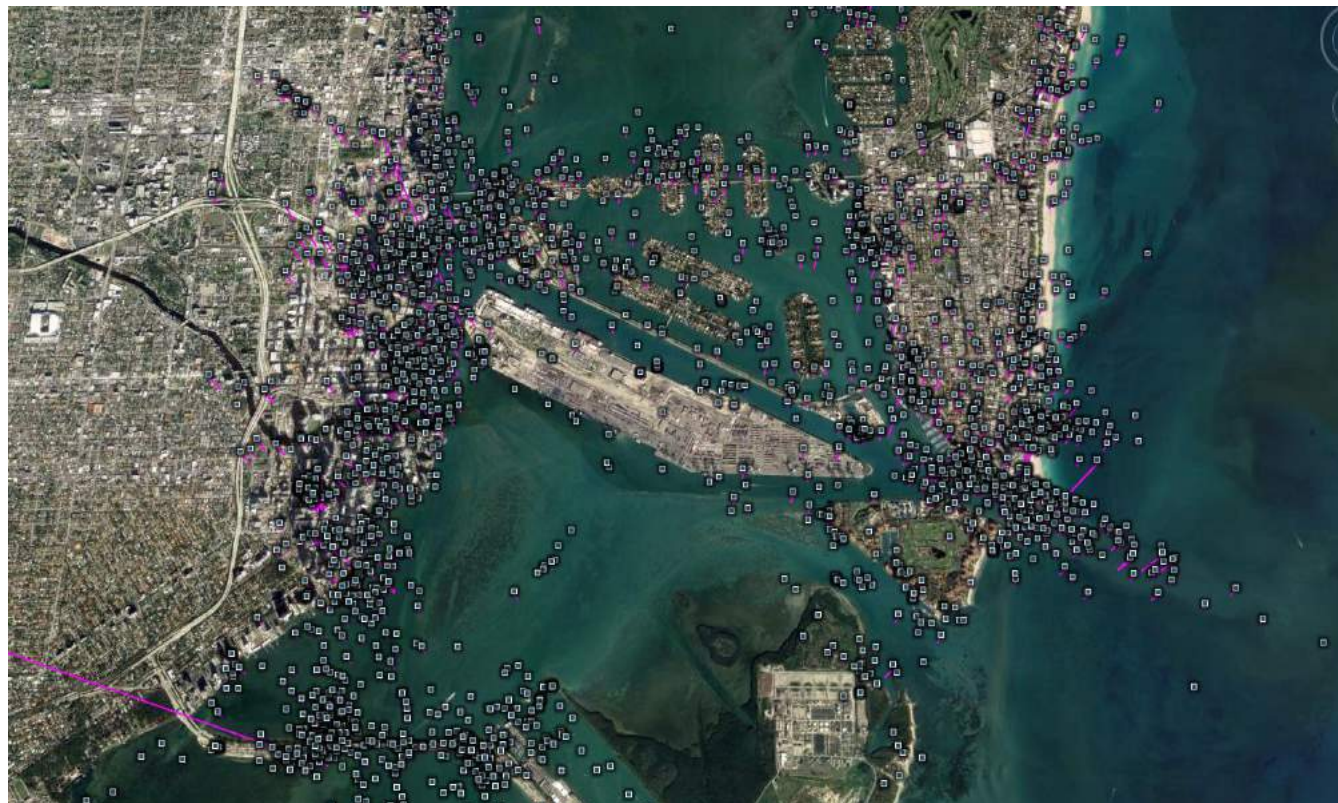
Study Conducted: January 1-22, 2019

Findings:

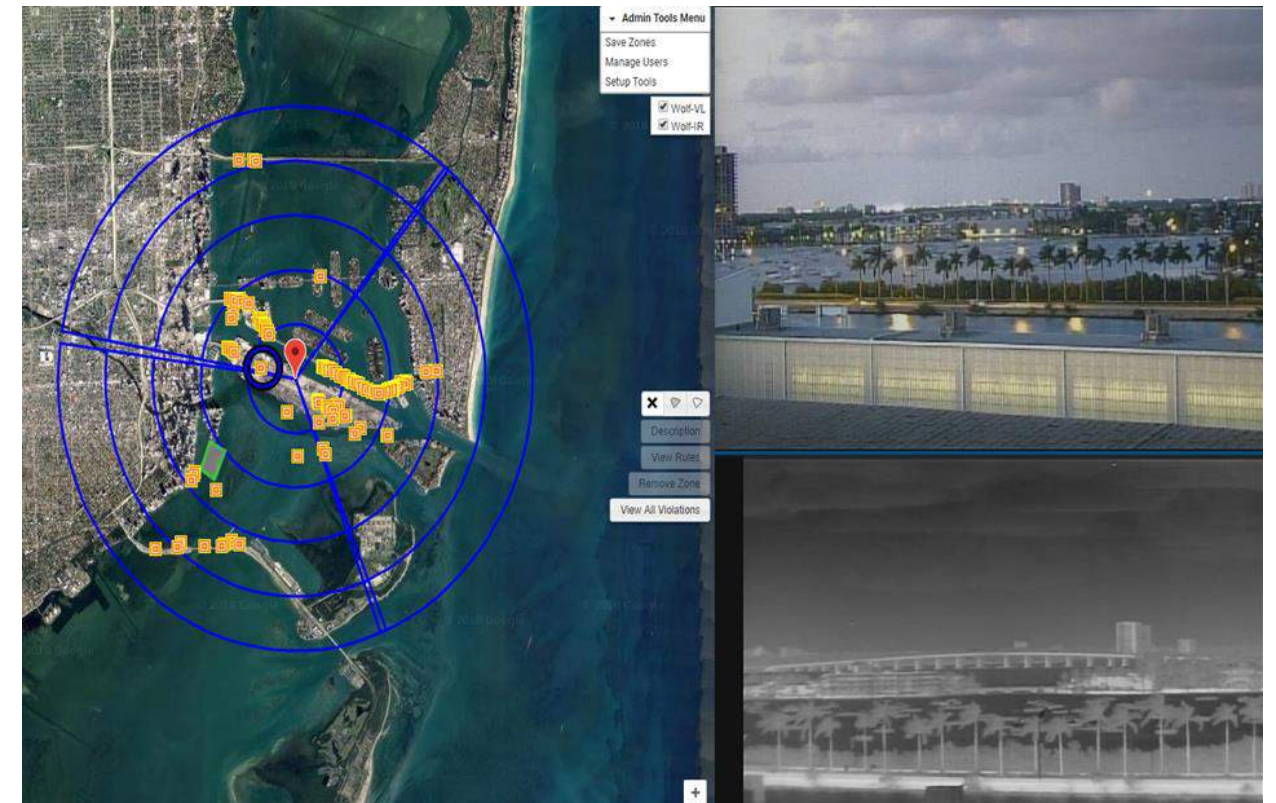
- 63,697 individual detections
- UAS population: 802 platforms
- Max detection range: 8.3 SM
- UAS Launches: 1,939



## UAS Flight Detections



## Radar & Electro-Optical/IR Capability







# Terminals & Waterside Security

All terminals have ballers and concrete barricades for pedestrian terminal protection.



Door access and security



Waterside officers provide security during vessel operations.



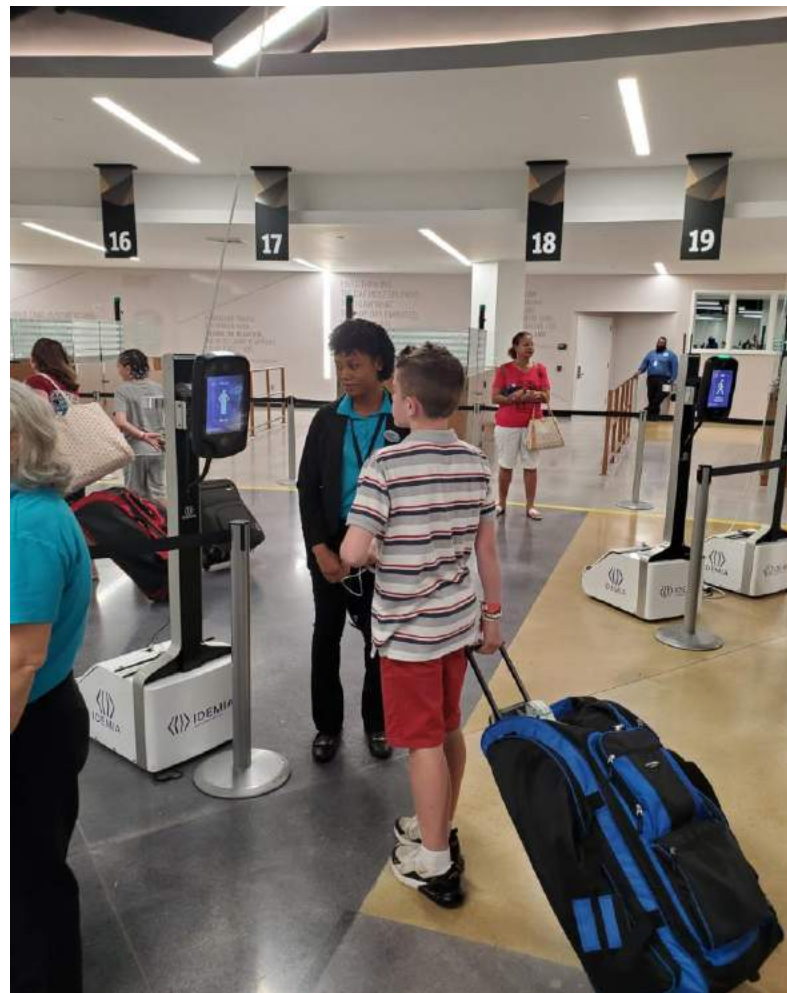
Waterside access gates are staffed during vessel operations with magnetometers. Bags and belongings are inspected and checked.





# Terminal Security & Facial Recognition

C.B.P. Facial Recognition



Terminal Security



# Incident Containment Team (I.C.T.) & Motorcycle Unit



The Incident Containment Team (I.C.T.) was established to provide high visibility patrols. Their primary goal is to mitigate an active shooter and/or a rapid evolving threat.



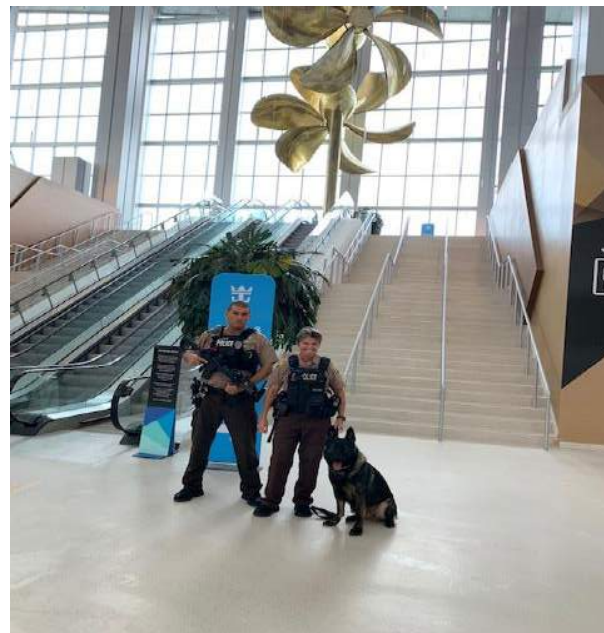
The Motorcycle Unit is responsible for the rapid and efficient flow of traffic. The unit also regulates commercial vehicles.





# PortMiami Explosive Odor Detection K9 Teams

Prior to operations daily sweeps on all active terminals.



Waterside sweeps on all active terminals.



Vehicle sweeps in close proximity to active terminals.



Random garage and vehicle sweeps.





# Apprehension and Explosive Detection Interdiction K9 Teams

Apprehension K9 and the Incident Containment Team



Explosive Detection Interdiction K9

These dogs are highly trained to detect explosive odor on moving bags and people.



# Harbor Patrol Unit



Channel Security



Jet Ski Patrol



Cargo Security & Escorts



Security Zone Enforcement



Weekly Dive Operations





## CRUISE WATCH

Cruise Watch was created to share and gather intelligence for all stakeholders and partners in the cruise line industry. Detectives meet weekly with staff captains upon the ships arrival and exchange information. PortMiami detectives also receive real-time emails with incidents involving ships at sea.



# AUTO THEFT TASK FORCE

The Auto Theft Taskforce was established to recover stolen vehicles being imported and exported through PortMiami.







# Multi-Agency Strike Force Operation (MASFO)

The Multi-Agency Strike Force Operation is conducted randomly to combat contraband and ensure that cargo operators are complying with local, state, and federal regulations.





# Multi-Agency Drills FY2018-19 (MDPD/MDFR/U.S. Coast Guard/U.S. Customs and Border Protection)



Boom Drill



Multi-Agency Unified Command Training



Airplane Down Drill



Active-Shooter Drill onboard the Miami Princess vessel.



Mass Casualty Drill (PortMiami Tunnel)

